

TASMANIAN STATISTICAL INDICATORS

EMBARGO: 11:30AM (CANBERRA TIME) THURSDAY 8 JULY 1999

C O N T E N T S

	<i>page</i>
NOTES	2
MAIN FEATURES	3
LIST OF TABLES	7

SUBJECT AREAS

1 Population and demography	9
2 Labour force	10
3 Wages and prices	19
4 Production	23
5 Primary industry	24
6 Building	28
7 Finance	29
8 Tourism	30
9 Transport	32
10 Retail trade	32
11 Overseas trade	33
12 Australia and State comparisons	35
13 Tasmanian Statistical Divisions comparisons	36

ADDITIONAL INFORMATION

Map: Tasmanian Statistical Divisions	37
--	----

- For more information about these and related statistics, contact Information Services on 03 6222 5800, or refer to the back cover of this publication.

NOTES

FORTHCOMING ISSUES	ISSUE	RELEASE DATE
	August 1999	9 August
	September 1999	8 September
	October 1999	8 October
INTRODUCTION	<p>1 This publication contains latest figures for a comprehensive range of economic indicators. Statistics shown in this publication are the latest available at the date of preparation and may be subject to revision in subsequent issues. In a number of cases figures appearing in this publication are preliminary and are subject to revision in subsequent issues. Reference should therefore always be made to the latest issue or to the statistical publication on the specific subject.</p>	
SEASONAL ADJUSTMENT AND TREND ESTIMATION	<p>2 Seasonal adjustment is a means of removing the estimated effects of normal seasonal variation from the series so that the effects of other influences on the series can be more clearly recognised. Seasonal adjustment does not aim to remove the irregular or non-seasonal influences which may be present in any particular month. This means that month-to-month movements of the seasonally adjusted estimates may not be reliable indicators of trend behaviour.</p> <p>3 The smoothing of seasonally adjusted series reduces the impact of the irregular components of the seasonally adjusted series and creates trend estimates. These trend estimates are derived by applying a 13-term Henderson-weighted moving average to all months except the last six. The last six monthly trend estimates are obtained by applying surrogates of the Henderson average to the seasonally adjusted series. Trend series are used to measure the underlying behaviour of the series over time.</p> <p>4 While this smoothing technique enables estimates to be produced for the latest month, it does result in revisions to the most recent months as additional observations become available. Generally, subsequent revisions become smaller and after 3 months have a negligible impact on the series. Revisions also occur as a result of the annual review of seasonal factors.</p>	
ABBREVIATIONS AND SYMBOLS	<p>n.a. not available</p> <p>n.p. not available for separate publication (but included in totals where applicable)</p> <p>n.y.a. not yet available</p> <p>.. not applicable</p> <p>— nil or rounded to zero</p> <p>p preliminary—figure or series subject to revision</p> <p>r figure or series revised since previous issue</p>	

Vince Lazzaro
Acting Regional Director, Tasmania

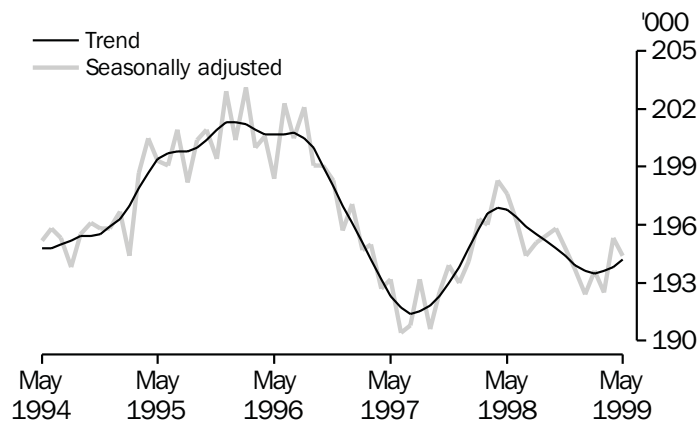
MAIN FEATURES

EMPLOYMENT

State comparisons There was a decrease of 1.3% in Tasmania's employment over the 12 months to May 1999. The largest percentage increase in employment was in South Australia (3.3%), followed by Queensland (2.8%), New South Wales (2.1%), Western Australia (1.1%) and Victoria (0.4%). (*See table 41.*)

Trend estimates

EMPLOYMENT, TASMANIA



THE LABOUR FORCE

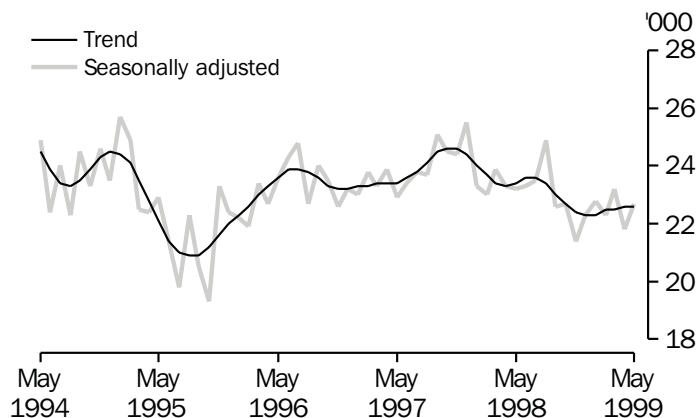
Trend estimates There were an estimated 216,800 persons (based on *trend* estimates) in the labour force in May 1999 and an estimated 370,000 civilian Tasmanians aged 15 years or more, yielding a labour force participation rate of 58.6%. This compares with 59.6% in May 1998.

For males, the *trend* estimate of the participation rate was 68.5%, compared with 69.6% for May 1998. For females, the *trend* estimate of the participation rate was 49.1%, compared with 50.1% in May 1998. (*See table 3.*)

UNEMPLOYMENT

Trend estimates The *trend* estimate of the number of unemployed persons in Tasmania for May 1999 was 22,600. This compares with 23,400 for May 1998. The *trend* estimate of the unemployment rate of 10.4% in May 1999 compares with 10.6% in May 1998. (*See table 3.*)

UNEMPLOYMENT, TASMANIA



WAGE COST INDEX

Original terms

The index of total hourly rates of pay, excluding bonuses, for all employee jobs in Australia increased by 0.9% from the December quarter 1998 to the March quarter 1999. For Tasmania, the index increased by 1.0%, the second highest increase of all States and Territories. The highest increase was in New South Wales (1.2%).

The largest increase in the indexes at the industry level for Tasmania was for Manufacturing (2.1%), Transport and storage (1.2%), and Health and community services (1.2%). The largest increase in the indexes at the occupation level for Tasmania was for Tradespersons and related workers, Intermediate production and transport workers, and Labourers and related workers (all 1.5%). (See table 14.)

HOUSE PRICE INDEX

The March Quarter Established House Price Index for Hobart rose 1.6% over the previous quarter, but fell 4.5% in annual terms. In the year to March Quarter 1999, Hobart, Darwin and Adelaide recorded decreases in the Index. Melbourne recorded the largest increase (10.9%).

LIVESTOCK SLAUGHTERING

Trend estimates

In April 1999, the *trend* estimate for Tasmania for the slaughtering of cattle and calves was 1.9% more than the previous month. Over the same period, the number of sheep and lambs slaughtered fell slightly and the number of pigs slaughtered rose by 4.5%.

In April 1999, the *trend* estimate of the number of cattle and calves slaughtered was 22,400 which was 6.2% less than the number slaughtered in April 1998 and 1.4% above the trend estimate for April 1997.

The *trend* estimate for the slaughtering of sheep and lambs was 73,300 in April 1999. This was 3.3% more than the number slaughtered in April 1998 and 8.1% above the *trend* estimate for April 1997.

The *trend* estimate of 6,900 pigs slaughtered in April 1999 was 8.6% more than the number slaughtered in April 1998 and 7.1% above the *trend* estimate for April 1997. (See table 21)

BUILDING APPROVALS

Original terms There were 126 dwelling units approved during April 1999 in Tasmania, with private sector houses accounting for 110 of this total. The number of dwelling units approved during April 1999 was the same as the March 1999 figure of 126, but 5.3% below the April 1998 figure of 133. For the twelve months ended April 1999 there were 1,462 new dwelling units approved, 12.6% below the 1,673 units recorded for the twelve months ended April 1998.

At current prices, the value of new residential building approved in April 1999 was \$12.4 million and the value of private non-residential building approved in April 1999 was \$23.8 million. At current prices, the value of all building approved in April 1999 was \$43.2 million. (See *table 27.*)

HOUSING FINANCE

Trend estimates The *trend* estimate for the number of secured housing finance commitments entered into in Tasmania in March 1999 was 936 dwellings, higher than the previous month's 915, and also higher than the March 1998 figure of 818.

The total value of commitments in March 1999 was \$79 million, higher than the previous month's figure of \$77 million. The March 1999 figure was higher than the March 1998 figure when the total value of commitments was \$62 million.

Nationally, the total number of secured housing commitments entered into in March 1999 was 41,691, an increase from the previous month's figure of 40,946. The value of these commitments increased between February 1999 and March 1999 from \$5,277 million to \$5,398 million. (See *table 28.*)

PRIVATE NEW CAPITAL EXPENDITURE

Original terms At current prices, total new capital expenditure, in Tasmania, for the March quarter 1999 was \$116 million. This was 22.1% above the December 1998 figure and 17.7% below the March quarter 1998 figure of \$141 million. (See *table 30.*)

Trend estimates At current prices, total new capital expenditure, in Tasmania, for the March quarter 1999 was \$116 million. This was 3.3% below the December quarter 1998 figure and 27.5% below the March quarter 1998 figure.

NEW MOTOR VEHICLE REGISTRATIONS

Original terms There were 1,098 new motor vehicles (excluding motorcycles) registered in Tasmania during April 1999. This was 10.5% below the 1,227 registered in March 1999 and 6.3% above the April 1998 figure of 1,033. In April 1999 there were no new vehicles registered by vehicle rental businesses in Tasmania, compared with 20 registered by vehicle rental businesses in March 1999 and 6 in April 1998. (See *table 36.*)

RETAIL

Original terms	In <i>original</i> terms, the estimate of retail turnover in Australia for April 1999 was \$11,727.6 million, 6.9% above the figure recorded in April 1998. In <i>original</i> terms, the estimate of retail turnover in Tasmania for April 1999 was \$269.6 million, 4.8% above the figure recorded in April 1998.
Trend estimates	In <i>trend</i> terms, the estimate of retail turnover in Australia for April 1999 was \$12,274.6 million, 8.3% above the figure recorded in April 1998. In <i>trend</i> terms, the estimate of retail turnover in Tasmania for April 1999 was \$279.3 million, 6.2% above the figure recorded in April 1998. (See table 37.)

OVERSEAS TRADE

Original Terms	<p>The total value of Tasmania's overseas exports for the 1997-98 financial year was \$2,136 million. This contributed 2.4% to the Australian total of \$87,769 million.</p> <p>The value of Tasmania's exports for the month of April 1999 was \$195 million, a decrease of 23% from the month of March. Australian exports for April totalled \$6,437 million, a decrease of 12% from the March figure.</p> <p>Tasmania's major export destinations for the month of April were United States (\$31.7m), Japan (\$31.3m), and Hong Kong (\$15.5m). Major commodity groups exported for the month were non-ferrous metals (\$50.2m), followed by road vehicles and transport equipment (34.1m). For the financial year 1997-98, major commodity groups exported were non-ferrous metals (\$557.1m), wood and woodchips (\$311.4m) and road vehicles and transport equipment (\$280.3m).</p>
----------------	--

LIST OF TABLES

	Page
1 Population	9
2 Births, deaths and marriages	9
3 Labour force status	10
4 Labour force status by region, males	11
5 Labour force status by region, females	12
6 Labour force status by region, persons	13
7 Teenage labour market	14
8 All employed persons by occupation	15
9 Employed wage and salary earners, sector and industry	16
10 Average hours worked	16
11 Job vacancies	17
12 Industrial disputes	17
13 Average weekly earnings of employees	18
14 Indexes of total hourly rates of pay	18
15 Summary of annual movements in wages and prices	19
16 House price index numbers, Hobart	19
17 Consumer price index, Hobart and eight capital cities combined	20
18 Price index of materials used in building other than house building, Hobart	21
19 Production of selected commodities	23
20 Livestock slaughtering: original	24
21 Livestock slaughtering: seasonally adjusted and trend	24
22 Meat production	25
23 Principal mineral concentrates produced	25
24 Sawmills and plywood mills, logs delivered and timber produced	26
25 Chipping and grinding of wood	26
26 Logs delivered for milling or chipping	27
27 Building approvals	28
28 Secured housing commitments	28
29 Banking statistics	29
30 Private new capital expenditure by type of asset	29

LIST OF TABLES—continued

	Page
31 Accommodation establishments	30
32 National Parks, person entries	31
33 Tracks in National Parks, walker registrations	31
34 Registrations of new motor vehicles	32
35 Turnover of retail establishments at current prices	32
36 Value of overseas trade—Tasmania and Australia	33
37 Merchandise exports by selected countries and country groups	33
38 Merchandise exports by selected commodity groups	34
39 Major Statistical Indicators—Australia and State comparisons	35
40 Major Statistical Indicators—Tasmanian Statistical Divisions	36

1

POPULATION: Original

	<i>Estimated resident population at end of period</i>	<i>Natural increase¹</i>	<i>Net estimated migration gain</i>	<i>Total population growth</i>	<i>Annual growth rate²</i>
<i>Year or quarter</i>	'000	'000	'000	'000	%
Year ended 30 June					
1996	474.4	2.5	-2.2	0.8	0.16
1997	473.5	2.4	-3.4	-1.0	-0.20
1998 p	471.9	2.1	-3.7	-1.6	-0.34
Quarter					
1996					
December	474.2	0.7	-0.9	-0.3	0.02
1997					
March	474.1	0.6	-0.8	-0.2	-0.02
June	473.5	0.5	-1.1	-0.6	-0.20
September p	473.1	0.5	-0.8	-0.4	-0.30
December p	472.7	0.5	-1.0	-0.4	-0.33
1998					
March p	472.4	0.6	-0.8	-0.2	-0.35
June p	471.9	0.5	-1.1	-0.5	-0.34
September p	471.6	0.5	-0.8	-0.3	-0.33
December p	471.1	0.7	-1.2	-0.4	-0.33

¹ Excess of live births registered over deaths registered (based on usual State of residence).

² Percentage growth from same quarter in previous year.

(Source: Australian Demographic Statistics, ABS catalogue number 3101.0)

2

BIRTHS, DEATHS AND MARRIAGES (BY STATE OF USUAL RESIDENCE): Original

	<i>Births</i>		<i>Deaths</i>		<i>Infant mortality¹</i>		<i>Marriages</i>	
<i>Year or quarter</i>	No.	Rate ²	No.	Rate ³	Deaths	Rate ⁴	No.	Rate ⁵
Year ended 31 December								
1996	6 337	1.854	3 826	7.0	28	4.4	2 654	5.6
1997	5 941	1.768	3 777	6.8	38	6.4	2 672	5.6
1998 p	5 965	1.809	3 611	6.3	34	5.7	2 558	5.4
Quarter								
1996								
December	1 586	..	932	..	3	1.9	658	..
1997								
March	1 483	..	863	..	7	4.7	900	..
June	1 505	..	988	..	12	8.0	600	..
September	1 563	..	1 095	..	12	7.7	554	..
December	1 390	..	851	..	7	5.0	618	..
1998								
March p	1 496	..	906	..	5	3.3	800	..
June p	1 444	..	908	..	13	9.0	810	..
September p	1 541	..	1 029	..	9	5.8	290	..
December p	1 484	..	768	..	7	4.7	658	..

¹ Deaths of children under one year of age.

² Total fertility rate. The sum of age-specific fertility rates (live births at each age of mother per female population of that age). It represents the number of children a woman would bear during her lifetime if she experienced current age-specific fertility rates at each age of her reproductive life.

³ Standardised death rate. The overall death rate, per 1,000 persons, that would have prevailed in a standard population if it had experienced at each age the death rates of the population being studied. The standard population used in these calculations is all persons in the 1991 Australian population.

⁴ Rate per 1,000 live births.

⁵ Crude marriage rate is the number of marriages registered during the calendar year, per 1,000 estimated resident population at 30 June of that year.

(Source: Australian Demographic Statistics, ABS catalogue number 3101.0)

3

LABOUR FORCE STATUS¹: Seasonally adjusted and trend

Month	Seasonally adjusted series ²				Trend series ²			
	Employed	Unemployed	Unemployment rate	Participation rate	Employed	Unemployed	Unemployment rate	Participation rate
	'000	'000	%	%	'000	'000	%	%
MALES								
1998								
May	111.3	14.6	11.6	69.8	110.5	15.0	12.0	69.6
June	109.7	14.7	11.8	69.0	109.8	15.2	12.1	69.3
July	107.3	15.6	12.7	68.1	109.1	15.2	12.2	68.9
August	108.7	15.9	12.8	69.1	108.8	15.0	12.1	68.7
September	108.4	14.8	12.0	68.3	108.6	14.7	11.9	68.4
October	109.3	14.5	11.7	68.6	108.5	14.4	11.7	68.1
November	109.2	13.3	10.8	67.9	108.3	14.2	11.6	67.9
December	108.6	13.0	10.7	67.4	108.0	14.2	11.6	67.7
1999								
January	106.4	15.1	12.4	67.4	107.7	14.4	11.8	67.7
February	106.6	15.4	12.6	67.6	107.6	14.6	12.0	67.8
March	107.3	15.4	12.6	68.1	107.8	14.8	12.1	68.0
April	109.5	13.9	11.3	68.4	108.2	14.9	12.1	68.2
May	109.4	14.7	11.9	68.9	108.6	14.9	12.1	68.5
FEMALES								
1998								
May	86.2	8.5	9.0	50.1	86.3	8.4	8.9	50.1
June	86.5	8.6	9.0	50.2	86.7	8.4	8.8	50.2
July	87.1	7.9	8.3	50.2	86.8	8.4	8.8	50.3
August	86.4	8.9	9.4	50.4	86.7	8.3	8.8	50.2
September	87.0	7.8	8.2	50.1	86.5	8.3	8.8	50.1
October	86.5	8.2	8.7	50.0	86.3	8.3	8.8	49.9
November	85.5	8.1	8.7	49.4	86.1	8.2	8.7	49.8
December	85.1	9.3	9.8	49.8	85.9	8.1	8.6	49.6
1999								
January	86.0	7.7	8.2	49.4	85.9	7.9	8.5	49.5
February	87.0	6.9	7.4	49.5	85.8	7.8	8.3	49.4
March	85.2	7.8	8.4	49.0	85.7	7.7	8.3	49.3
April	85.8	7.9	8.4	49.4	85.6	7.7	8.2	49.2
May	85.0	8.0	8.6	49.0	85.5	7.7	8.2	49.1
TOTAL								
1998								
May	197.6	23.2	10.5	59.7	196.8	23.4	10.6	59.6
June	196.2	23.3	10.6	59.4	196.4	23.6	10.7	59.5
July	194.4	23.5	10.8	58.9	195.9	23.6	10.7	59.4
August	195.1	24.9	11.3	59.5	195.5	23.4	10.7	59.2
September	195.4	22.6	10.4	59.0	195.2	23.0	10.6	59.0
October	195.8	22.7	10.4	59.1	194.8	22.7	10.4	58.8
November	194.8	21.4	9.9	58.5	194.4	22.4	10.3	58.6
December	193.7	22.3	10.3	58.4	193.9	22.3	10.3	58.4
1999								
January	192.4	22.8	10.6	58.2	193.6	22.3	10.3	58.4
February	193.6	22.3	10.3	58.4	193.5	22.5	10.4	58.4
March	192.5	23.2	10.8	58.3	193.6	22.5	10.4	58.4
April	195.3	21.8	10.0	58.7	193.8	22.6	10.4	58.5
May	194.4	22.7	10.5	58.7	194.2	22.6	10.4	58.6

¹ For explanation of terms and concepts, refer to *Labour Force, Australia*, ABS catalogue number 6203.0.

² Seasonal factors are reviewed annually to take account of each additional year's original data. The results of the review are used to compile revised seasonally adjusted and trend estimates each February. Trend estimates for the most recent months are also revised each month; see Notes on page 2.

(Source: *Labour Force Australia*, ABS catalogue number 6203.0)

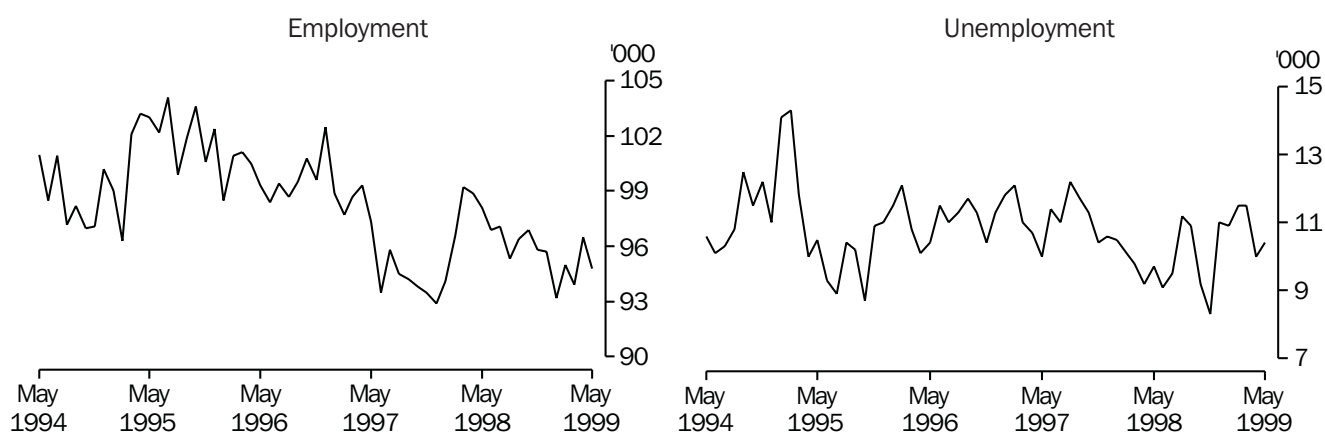
4

LABOUR FORCE STATUS BY REGION, MALES^{1, 2}: **Original**

	<i>Total employed</i>	<i>Total unemployed</i>	<i>Unemployment rate</i>	<i>Participation rate</i>
<i>Month</i>	'000	'000	%	%
HOBART AND SOUTHERN STATISTICAL DIVISIONS				
1996				
May	56.0	6.7	10.6	70.0
1998				
May	54.3	5.6	9.3	68.2
1999				
March	51.7	7.7	13.0	68.9
April	53.2	6.6	11.1	68.9
May	51.8	6.9	11.8	68.0
NORTHERN STATISTICAL DIVISION				
1996				
May	32.3	3.9	10.8	72.3
1998				
May	31.5	4.3	12.0	70.3
1999				
March	31.8	3.9	10.9	68.4
April	31.5	3.9	11.0	69.1
May	33.9	3.1	8.3	71.1
MERSEY-LYELL STATISTICAL DIVISION				
1996				
May	26.6	3.5	11.5	72.5
1998				
May	27.3	3.7	11.9	72.8
1999				
March	24.7	3.7	13.0	67.7
April	25.3	3.1	10.9	67.0
May	24.7	3.5	12.3	67.1
TASMANIA				
1996				
May	115.0	14.0	10.9	71.2
1998				
May	113.2	13.5	10.7	69.9
1999				
March	108.2	15.3	12.4	68.5
April	110.0	13.6	11.0	68.5
May	110.4	13.5	10.9	68.7

¹ For explanation of terms and concepts, refer to *Labour Force, Australia*, ABS catalogue number 6203.0.

² Data in this table are original series, i.e. they are not part of a seasonally adjusted or a trend series. Accordingly, care should be exercised when using these data. New monthly data from each quarter (March, June, September and December) are published two months after the quarter. (Source: Labour Force Estimates—microfiche tables.)

Hobart and Southern Statistical Divisions—Persons: **Original** (see Table 6.)

5

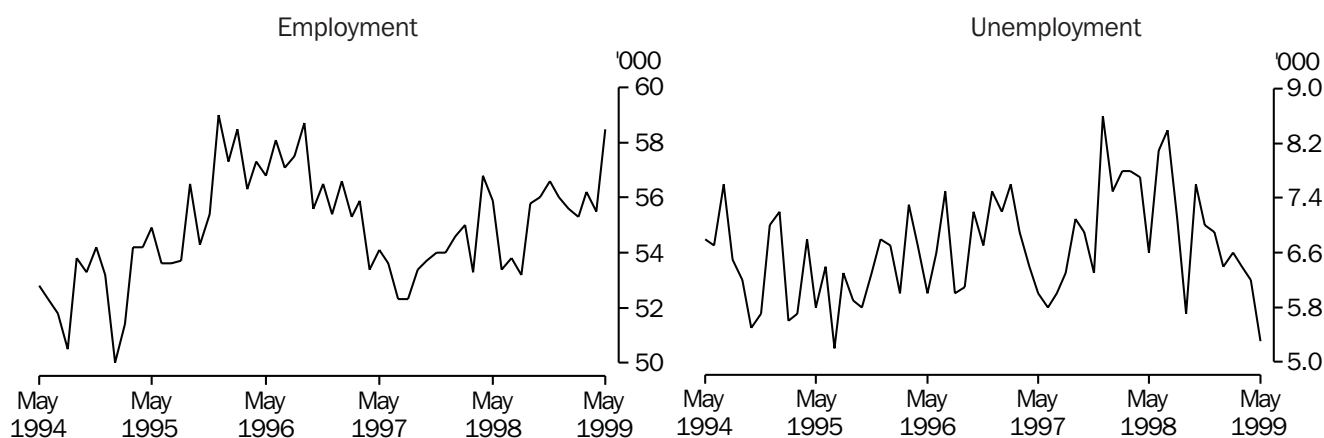
LABOUR FORCE STATUS BY REGION, FEMALES^{1, 2}: **Original**

	<i>Total employed</i>	<i>Total unemployed</i>	<i>Unemployment rate</i>	<i>Participation rate</i>
<i>Month</i>	'000	'000	%	%
HOBART AND SOUTHERN STATISTICAL DIVISIONS				
1996				
May	43.7	3.7	7.9	51.0
1998				
May	43.7	4.1	8.5	52.5
1999				
March	42.2	3.8	8.3	49.9
April	43.3	3.4	7.2	50.5
May	43.0	3.4	7.4	50.6
NORTHERN STATISTICAL DIVISION				
1996				
May	24.5	2.2	8.1	51.8
1998				
May	24.4	2.4	9.0	50.0
1999				
March	24.4	2.5	9.4	51.1
April	18.0	1.7	8.4	46.3
May	24.6	2.2	8.2	50.3
MERSEY-LYELL STATISTICAL DIVISION				
1996				
May	17.8	2.3	11.5	46.9
1998				
May	18.5	1.6	7.8	46.6
1999				
March	18.9	1.8	8.8	46.2
April	20.2	1.5	7.1	48.4
May	18.7	2.0	9.5	46.4
TASMANIA				
1996				
May	86.0	8.2	8.7	50.3
1998				
May	86.6	8.0	8.5	50.5
1999				
March	85.4	8.1	8.7	49.3
April	87.5	7.2	7.6	49.9
May	86.3	7.6	8.1	49.5

¹ For explanation of terms and concepts, refer to *Labour Force, Australia*, ABS catalogue number 6203.0.

² Data in this table are original series, i.e. they are not part of a seasonally adjusted or a trend series. Accordingly, care should be exercised when using these data. New monthly data from each quarter (March, June, September and December) are published two months after the quarter. (Source: Labour Force Estimates—microfiche tables.)

Northern Statistical Division—Persons: **Original** (see Table 6.)



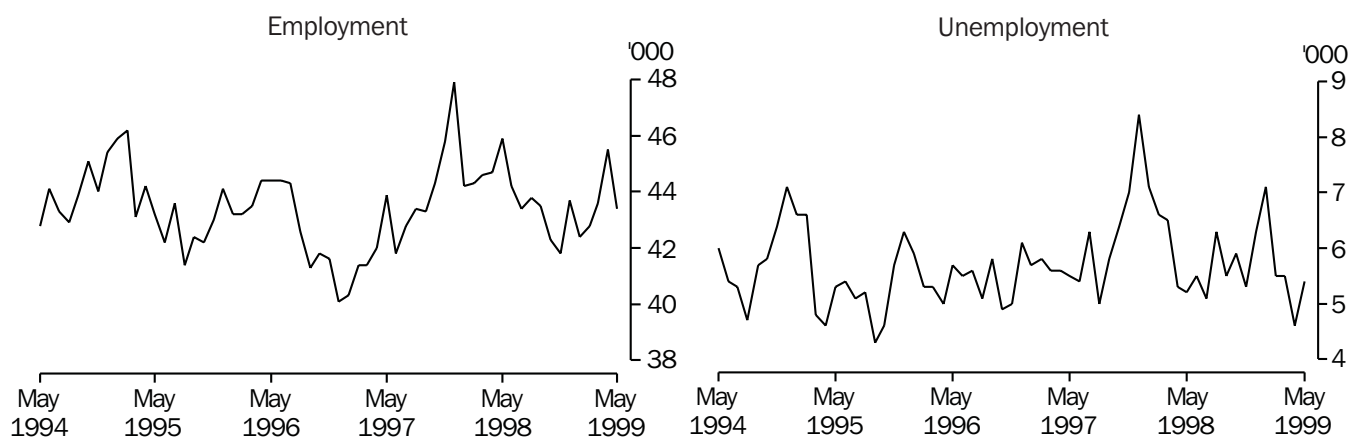
6

LABOUR FORCE STATUS BY REGION, PERSONS^{1, 2}: **Original**

	<i>Total employed</i>	<i>Total unemployed</i>	<i>Unemployment rate</i>	<i>Participation rate</i>
<i>Month</i>	'000	'000	%	%
HOBART AND SOUTHERN STATISTICAL DIVISIONS				
1996				
May	99.7	10.4	9.4	60.3
1998				
May	98.0	9.6	8.9	60.2
1999				
March	93.9	11.5	11.0	59.1
April	96.5	10.0	9.4	59.4
May	94.8	10.4	9.9	59.0
NORTHERN STATISTICAL DIVISION				
1996				
May	56.8	6.0	9.6	61.9
1998				
May	55.9	6.7	10.7	59.9
1999				
March	56.2	6.4	10.2	59.7
April	55.5	6.2	10.0	59.5
May	58.5	5.3	8.2	60.6
MERSEY-LYELL STATISTICAL DIVISION				
1996				
May	44.4	5.8	11.5	59.5
1998				
May	45.8	5.2	10.3	59.6
1999				
March	43.6	5.5	11.2	56.6
April	45.5	4.6	9.2	57.4
May	43.4	5.4	11.1	56.4
TASMANIA				
1996				
May	200.9	22.2	10.0	60.6
1998				
May	199.8	21.6	9.7	60.0
1999				
March	193.6	23.5	10.8	58.7
April	197.5	20.8	9.5	59.0
May	196.7	21.1	9.7	58.9

¹ For explanation of terms and concepts, refer to *Labour Force, Australia*, ABS catalogue number 6203.0.

² Data in this table are original series, i.e. they are not part of a seasonally adjusted or a trend series. Accordingly, care should be exercised when using these data. New monthly data from each quarter (March, June, September and December) are published two months after the quarter. (Source: Labour Force Estimates—microfiche tables.)

Mersey-Lyell Statistical Division—Persons: **Original** (see Table 6.)

Month	Employed		Unemployed		Labour force	Not in labour force	Civilian population aged 15–19	Unem-employment rate	Unem-employment population ratio	Partici-pation rate
	Full-time	Total	Looking for full-time work	Total						
'000	'000	'000	'000	'000	'000	'000	%	%	%	
ATTENDING NEITHER SCHOOL NOR A TERTIARY INSTITUTION FULL TIME										
1996 May	7.0	9.3	2.5	2.7	12.0	1.0	13.0	22.4	20.8	92.2
1998 May	6.9	9.3	2.4	2.5	11.8	1.1	12.9	21.1	19.3	91.5
1999 March	6.7	8.7	2.1	2.1	10.8	2.0	12.7	19.6	16.5	84.6
April	7.2	9.7	2.1	2.5	12.2	1.4	13.6	20.2	18.1	89.5
May	7.2	9.2	2.4	2.5	11.6	1.4	13.0	21.2	18.9	89.2
ATTENDING SCHOOL OR A TERTIARY INSTITUTION FULL TIME										
1996 May	0.2	6.6	0.4	1.1	7.7	13.3	21.0	14.3	5.2	36.7
1998 May	—	6.5	0.3	1.5	7.9	13.7	21.6	18.3	6.7	36.7
1999 March	—	5.3	0.5	2.8	8.1	13.6	21.7	34.1	12.7	37.3
April	0.2	6.1	0.3	1.4	7.6	13.3	20.9	18.8	6.8	36.2
May	0.2	6.2	0.3	2.0	8.1	13.3	21.5	24.7	9.3	37.7
TOTAL										
1996 May	7.1	15.9	2.9	3.8	19.7	14.3	34.1	19.4	11.1	57.9
1998 May	6.9	15.8	2.7	3.9	19.7	14.7	34.5	20.0	11.4	57.2
1999 March	6.7	14.0	2.6	4.9	18.9	15.6	34.5	25.8	14.1	54.8
April	7.5	15.9	2.4	3.9	19.8	14.7	34.5	19.7	11.3	57.3
May	7.4	15.3	2.7	4.5	19.8	14.7	34.5	22.6	13.0	57.4

¹ Persons aged 15–19 years.

² For explanation of terms and concepts, refer to *Labour Force, Australia*, ABS catalogue number 6203.0.

³ Care should be exercised in using these series as some estimates are subject to high sampling variability..
(Source: Labour Force Estimates—unpublished data.)

Occupation	February 1998		February 1999		Proportion of total employed	
	Persons		Males	Females	Persons	
	'000		'000	'000	'000	
					February 1998	February 1999
					%	%
Managers and administrators	11.2		7.7	2.8	10.6	5.7
Generalist managers	1.4		0.9	0.1	1.0	0.5
Specialist managers	3.8		2.6	1.3	3.9	2.0
Farmers and farm managers	6.0		4.2	1.5	5.6	2.9
Professionals	30.6		14.4	13.7	28.1	15.6
Science, building and engineering professionals	4.0		2.6	0.2	2.8	1.4
Business and information professionals	6.3		3.2	1.4	4.6	2.4
Health professionals	6.9		1.9	5.8	7.7	4.0
Education professionals	7.5		3.0	3.8	6.8	3.5
Social, arts and miscellaneous professionals	5.9		3.8	2.4	6.2	3.2
Associate professionals	18.5		12.6	5.4	17.9	9.4
Science, engineering and related associate professionals	1.8		2.6	0.9	3.5	1.8
Business and administration associate professionals	3.3		2.7	1.4	4.0	2.1
Managing supervisors (sales and service)	10.5		4.5	2.3	6.8	3.5
Other associate professionals	2.9		2.8	0.8	3.6	1.9
Tradespersons and related workers	29.2		23.9	2.5	26.4	14.9
Mechanical and fabrication engineering tradespersons	6.1		4.9	—	4.9	2.5
Automotive tradespersons	3.4		2.5	—	2.5	1.3
Electrical and electronics tradespersons	3.4		4.4	—	4.4	2.3
Construction Tradespersons	5.6		5.4	—	5.4	2.8
Other tradespersons and related workers	10.7		6.7	2.5	9.2	4.8
Advanced clerical and service workers	4.0		0.5	3.2	3.7	2.0
Secretaries and personal assistants	2.3		—	2.2	2.2	1.1
Other advanced clerical and service workers	1.7		0.5	1.0	1.5	0.8
Intermediate clerical, sales and service workers	40.7		9.6	29.2	38.8	20.7
Intermediate clerical workers	24.8		4.8	17.3	22.1	11.4
Intermediate sales and related workers	3.7		2.6	1.3	3.9	2.0
Intermediate service workers	12.2		2.2	10.6	12.9	6.7
Intermediate production and transport workers	19.0		17.3	2.1	19.4	9.7
Intermediate plant operators	5.4		6.3	0.2	6.5	3.4
Intermediate machine operators	2.0		1.0	0.6	1.5	0.8
Road and rail transport drivers	6.4		5.6	0.5	6.1	3.2
Other intermediate production and transport workers	5.1		4.4	0.8	5.3	2.7
Elementary clerical, sales and service workers	21.8		8.0	15.8	23.8	11.1
Elementary clerks	1.4		1.1	1.0	2.1	1.1
Elementary sales workers	18.7		6.3	13.8	20.1	10.4
Elementary service workers	1.8		0.7	1.0	1.7	0.9
Labourers and related workers	21.4		13.4	11.0	24.4	12.6
Cleaners	6.4		1.1	4.6	5.7	3.0
Factory labourers	3.9		3.5	1.8	5.3	2.7
Other labourers and related workers	11.0		8.8	4.6	13.4	6.9
Total employed	196.3		107.4	85.8	193.2	100.0

¹ For explanation of terms and concepts, refer to *Labour Force, Australia*, ABS catalogue number 6203.0.
(Source: Labour Force Estimates—unpublished data.)

9

EMPLOYED WAGE AND SALARY EARNERS, SECTOR AND INDUSTRY¹: **Original**

Industry	Employees, November 1998			Percentage distribution	
	Private No. ('000)	Public No. ('000)	Private and public No. ('000)	November 1997	November 1998
Agriculture, forestry, & fishing	n.a.	0.6	0.6	0.4	0.4
Mining	1.4	—	1.4	1.0	0.9
Manufacturing	22.5	0.1	22.5	13.8	14.3
Electricity, gas & water, Construction	4.4	2.1	6.5	4.3	4.1
Wholesale & Retail trade	31.4	—	31.4	19.1	20.0
Accommodation, cafes & restaurants	10.3	—	10.3	6.9	6.6
Transport & storage	5.3	0.8	6.1	3.6	3.9
Communication services	0.2	2.0	2.3	1.7	1.5
Finance, insurance, Property & business services	14.6	0.8	15.3	10.9	9.8
Education	3.1	14.7	17.8	11.6	11.4
Government administration and defence	—	10.0	10.0	6.2	6.4
Health and community services	15.0	8.6	23.6	15.0	15.1
Cultural, recreational, Personal and other services	6.4	2.6	8.9	5.6	5.7
Total all industries	114.6	42.2	156.8	100.0	100.0

¹ For explanation of terms and concepts, refer to *Employed Wage and Salary Earners, Australia*, catalogue number 6248.0.
(Source: *Employed Wage and Salary Earners*, ABS catalogue number 6248.0.)

10

AVERAGE HOURS WORKED: **Original**

Month	Average weekly total hours worked, all employed persons ¹			Average weekly overtime hours ²		Percentage of employees working overtime
	Males	Females	Persons	Per employee	Per employee working overtime	
1997						
November	38.7	26.8	33.6	0.6	6.3	9.2
1998						
February	37.8	26.1	32.8	0.7	6.7	9.8
May	39.1	27.5	34.1	0.7	7.1	10.1
August	38.3	27.0	33.4	0.7	6.2	10.7
November	38.1	27.1	33.3	0.8	6.8	11.4
1999						
February	36.7	25.6	31.8	0.8	6.8	12.5

¹ For explanation of terms and concepts, refer to *Labour Force, Australia*, ABS catalogue number 6203.0.

² For explanation of terms and concepts, refer to *Job Vacancies and Overtime, Australia*, ABS catalogue number 6354.0.
(Source: *Job Vacancies and Overtime, Australia*, ABS catalogue number 6354.0 and unpublished data.)

11 JOB VACANCIES^{1, 2}: Original

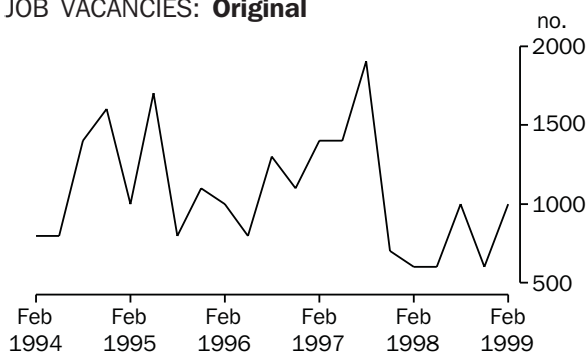
Period	Number '000	Rate ³ %
1997		
November	0.7	0.5
1998		
February	0.6	0.4
May	0.6	0.4
August	1.0	0.7
November	0.6	0.4
1999		
February	1.0	0.7

¹ For explanation of terms and concepts refer to *Job Vacancies and Overtime, Australia*, catalogue number 6354.0.

² Care should be exercised in using these series as some estimates are subject to high sampling variability.

³ Job vacancies are expressed as a percentage of the number of job vacancies divided by the number of employees plus job vacancies.

JOB VACANCIES: Original



12 INDUSTRIAL DISPUTES¹: Original

Month	Working days lost '000	Twelve months ended	Working days lost per thousand employees no.
1998		1998	
February	—	February	35
March	—	March	35
April	0.5	April	38
May	0.2	May	30
June	0.2	June	31
July	0.2	July	10
August	1.3	August	18
September	0.3	September	18
October	—	October	17
November	0.3	November	18
December	0.2	December	19
1999		1999	
January	—	January	19
February	—	February	19
Twelve months ended 1999			
February	3.1		

¹ For explanation of terms and concepts, refer to *Industrial Disputes, Australia*, ABS catalogue number 6321.0.

13

AVERAGE WEEKLY EARNINGS OF EMPLOYEES¹: Original and trend

Survey reference period	Full-time adult males		All males	Full-time adult females		All females	Full-time adult persons		All employees
	Weekly ordinary time earnings	Weekly total earnings	Weekly total earnings	Weekly ordinary time earnings	Weekly total earnings	Weekly total earnings	Weekly ordinary time earnings	Weekly total earnings	Weekly total earnings
	\$	\$	\$	\$	\$	\$	\$	\$	\$
ORIGINAL									
1997									
November	732.70	765.40	661.60	595.00	605.40	399.10	686.10	711.20	528.00
1998									
February	739.30	776.30	669.20	602.40	615.40	400.10	692.80	721.70	534.10
May	727.60	778.60	667.20	605.20	615.20	400.40	686.60	723.90	533.60
August	732.50	769.30	652.20	613.40	626.20	418.90	692.00	720.60	536.10
November	738.50	783.70	672.90	621.30	637.00	407.70	699.30	734.70	537.00
1999									
February	747.40	803.10	696.30	619.90	632.20	422.50	705.10	746.40	560.50
TREND ²									
1997									
November	729.10	765.50	655.50	592.30	602.30	397.60	682.40	709.80	526.10
1998									
February	733.30	772.20	661.50	599.60	610.50	400.00	687.70	717.30	530.10
May	733.80	774.90	663.60	608.10	620.50	405.60	691.30	722.70	534.10
August	734.50	778.60	666.70	615.00	628.10	411.20	694.60	728.10	538.30
November	737.50	785.10	673.70	618.10	631.40	414.30	697.70	733.80	543.10
1999									
February	742.30	794.80	683.10	618.50	631.70	415.80	700.70	740.50	548.50

¹ For explanation of terms and concepts, refer to *Average Weekly Earnings, States and Australia*, ABS catalogue number 6302.0.

² ABS Trend estimates for the most recent months are revised, see Notes on page 2.
(Source: *Average Weekly Earnings, States and Australia*, ABS catalogue number 6302.0.)

14

INDEXES OF TOTAL HOURLY RATES OF PAY (EXCLUDING BONUSES)¹: Original
(Base of each index: September Quarter 1997 = 100.0)

Industry ² or occupation	Index numbers				% change		
	Jun Qtr 1998	Sept Qtr 1998	Dec Qtr 1998	Mar Qtr 1999	Jun Qtr 1998 to Sep Qtr 1998	Sept Qtr 1998 to Dec Qtr 1998	Dec Qtr '99 to Mar Qtr '99
SELECTED INDUSTRIES							
Manufacturing	102.0	102.3	102.5	104.7	0.3	0.2	2.1
Retail trade	100.9	102.2	103.1	103.7	1.3	0.9	0.6
Transport & storage	102.9	103.3	103.7	104.9	0.4	0.4	1.2
Finance & insurance	101.2	102.3	102.9	103.3	1.1	0.6	0.4
Government admin. & defence	101.0	101.2	102.1	102.7	0.2	0.9	0.6
Education	101.5	104.5	105.2	105.5	3.0	0.7	0.3
Health and community services	100.4	100.8	101.4	102.6	0.4	0.6	1.2
All industries³	101.4	102.4	102.9	103.9	1.0	0.5	1.0
OCCUPATION							
Professionals	100.9	103.0	103.9	104.7	2.1	0.9	0.8
Associate professionals	102.2	103.0	103.4	104.3	0.8	0.4	0.9
Tradespersons & related workers	101.4	102.4	102.5	104.0	1.0	0.1	1.5
Intermediate clerical, sales & service workers	101.2	101.9	102.7	103.7	0.7	0.8	1.0
Intermediate production & transport workers	102.1	102.4	102.8	104.3	0.3	0.4	1.5
Elementary clerical, sales & service workers	103.1	103.3	103.8	105.0	0.2	0.5	1.2
Labourers & related workers	100.6	101.1	101.7	103.2	0.5	0.6	1.5
All occupations	101.4	102.4	102.9	103.9	1.0	0.5	1.0

¹ These indexes are a measure of quarterly changes in wage and salary costs for employee jobs. They were compiled for the first time for the December quarter 1997. They are one of four sets of indexes that together comprise the Wage Cost Index.

For explanation of terms and concepts, refer to *Wage Cost Index, Australia*, ABS catalogue number 6345.0.

² Industry is shown at the ANZSIC division level for selected divisions.

³ Excludes Agriculture, Forestry and Fishing.

(Source: ABS unpublished data.)

15

SUMMARY OF ANNUAL MOVEMENTS IN WAGES AND PRICES¹: **Original**

Period	CPI. All groups Hobart	Price index of materials used in house building. All groups, Hobart ²	Price index of materials used in building other than house building. All groups, Hobart ²	Average weekly total earnings, full-time adult employees ³
PERCENTAGE CHANGE FROM PREVIOUS YEAR				
1995-96	3.8	2.9	2.6	2.8
1996-97	1.5	-0.5	1.0	4.6
1997-98	-0.1	0.7	0.9	5.1
1997				
March	1.5	-0.5	1.1	6.2
June	0.6	-0.4	1.3	4.2
September	-0.4	-0.2	0.6	6.7
December	-0.1	0.7	0.9	4.6
1998				
March	-0.3	0.9	1.0	4.3
June	0.6	1.6	1.2	4.9
September	1.8	1.8	1.6	3.3
December	1.2	1.4	1.2	3.3
1999				
March	0.5	0.7	0.7	3.4

¹ Weekly award rates of pay collection has been discontinued from June 1997.
² Only quarterly data collected from June 1997. Earlier data has been re-compiled from monthly to quarterly.
³ March, June, September and December data relates to February, May, August and November survey dates as published in 6302.0.
 (Sources: Consumer Price Index, ABS catalogue number 6401.0; Price Index of Materials Used in House Building, ABS catalogue number 6408.0, (quarterly from June 1997); Price Index of Materials Used in Other than House Building, ABS catalogue number 6407.0, (quarterly from June 1997); Average Weekly Earnings, States and Australia, ABS catalogue number 6302.0)

16

HOUSE PRICE INDEX NUMBERS¹, HOBART: **Original** (Base of each Index: 1989-90 = 100.0)

	Established house price index		Project home price index	
	Index	% change ²	Index	% change ²
1995-96	129.8	0.6	123.4	1.7
1996-97	128.5	-1.0	123.3	-0.1
1997-98	125.4	-2.4	123.3	—
1997				
March	130.4	1.5	123.3	—
June	124.9	-4.2	123.3	—
September	123.5	-1.1	123.3	—
December	123.9	0.3	123.3	—
1998				
March	129.5	4.5	123.3	—
June	124.8	-3.6	123.3	—
September	123.8	-0.8	123.3	—
December	121.7	-1.7	123.3	—
1999				
March	123.7	1.6	123.3	—

¹ Used in calculating the mortgage interest charges component of the Consumer Price Index.

² Percentage change over previous period.

(Source: House Price Indexes: Eight Capital Cities, ABS catalogue number 6416.0)

Period	<i>Hobart</i>					
	<i>Food</i>	<i>Clothing</i>	<i>Housing</i>	<i>Household equipment and operation</i>	<i>Transportation</i>	<i>Alcohol and tobacco</i>
1996						
March	118.1	106.3	107.2	117.8	119.0	150.3
June	118.4	106.0	107.6	118.5	119.8	153.3
September	120.0	105.9	107.4	119.1	119.7	153.7
December	120.6	105.6	104.8	119.4	121.8	152.7
1997						
March	120.7	105.7	101.9	120.1	122.8	153.1
June	121.0	105.3	98.4	120.1	121.7	153.5
September	121.0	104.8	97.7	119.7	122.2	153.6
December	121.7	106.0	95.5	119.7	122.1	155.6
1998						
March	121.7	105.5	95.3	119.4	121.7	158.0
June	122.3	105.3	95.5	119.5	120.5	160.2
September	124.7	105.1	95.6	120.4	120.4	159.6
December	125.0	105.7	95.4	120.8	118.6	159.1
1999						
March	125.5	104.7	95.8	119.5	118.4	161.5

Period	<i>Hobart</i>				<i>Weighted average of eight capital cities</i>	
	<i>Health and personal care</i>	<i>Recreation and education</i>	<i>Index, all groups</i>	<i>% change over previous period, all groups</i>	<i>Index</i>	<i>% change over previous period</i>
1996						
March	149.7	117.1	120.1	0.8	119.0	0.4
June	150.5	116.0	120.6	0.4	119.8	0.7
September	154.1	115.1	121.1	0.4	120.1	0.3
December	154.8	116.8	121.3	0.2	120.3	0.2
1997						
March	159.4	120.5	121.9	0.5	120.5	0.2
June	162.6	119.2	121.3	−0.5	120.2	−0.2
September	153.0	119.2	120.6	−0.6	119.7	−0.4
December	160.9	120.6	121.2	0.5	120.0	0.3
1998						
March	162.7	121.7	121.5	0.2	120.3	0.3
June	166.1	122.6	122.0	0.4	121.0	0.6
September	171.5	122.5	122.8	0.7	121.3	0.2
December	169.5	124.2	122.7	−0.1	121.9	0.5
1999						
March	154.4	125.2	122.1	−0.5	121.8	−0.1

¹ Further information on construction of CPI indexes is contained in the bulletin *The Australian Consumer Price Index Concepts, Sources and Methods* (Catalogue No. 6461.0).

² The CPI is now published on a reference base of 1989–90 = 100.0.
(Source: *Consumer Price Index*, ABS catalogue number 6401.0.)

Index numbers for selected major building materials							
Period	Structural timber	Clay bricks	Ready mixed concrete	Precast concrete products	Steel decking, cladding etc.	Structural steel	
1995–96	119.0	122.6	115.2	129.5	111.5	121.4	
1996–97	110.3	125.3	116.2	132.2	115.0	126.2	
1997–98	108.9	129.0	118.0	131.5	117.8	127.2	
1997							
March	109.2	125.7	116.7	132.2	116.5	126.7	
June	108.9	125.7	117.4	131.2	118.8	126.8	
September	107.5	127.9	114.9	131.2	118.9	126.9	
December	106.6	129.4	116.8	131.2	118.9	127.1	
1998							
March	109.2	129.4	120.4	131.7	118.9	127.4	
June	112.4	129.4	119.9	131.7	114.3	127.4	
September	109.4	130.2	119.2	131.7	111.3	127.7	
December	108.9	131.1	120.6	131.7	111.3	128.1	
1999							
March	108.9	131.1	120.4	131.5	110.3	128.1	
Index numbers for selected major building materials							
Period	Reinforcing steel bar, fabric and mesh	Aluminium windows	Fabricated steel products	Builders' hardware	Sand & aggregate	Paint & other coatings	Non-ferrous pipes & fittings
1995–96	108.9	104.5	108.9	118.3	133.1	120.1	172.9
1996–97	110.7	105.9	113.3	117.2	132.7	126.6	165.2
1997–98	112.7	107.2	114.7	113.7	124.5	127.3	164.3
1997							
March	110.9	106.8	113.4	117.1	134.5	127.4	164.1
June	110.9	106.8	113.5	115.2	129.9	125.5	167.2
September	110.9	106.8	114.0	115.3	121.4	124.6	168.5
December	113.0	106.8	114.0	112.5	121.4	123.5	163.0
1998							
March	113.5	106.8	114.8	112.8	127.5	130.5	162.9
June	113.4	108.4	116.1	114.0	127.5	130.7	162.6
September	113.4	108.4	116.1	113.7	127.9	132.7	162.8
December	113.3	106.7	116.1	113.9	127.9	133.9	160.2
1999							
March	113.4	106.9	116.1	114.8	127.9	134.2	161.4

¹ Index numbers in this table have been recompiled to reflect the change to a quarterly collection basis from June 1997.
(Source: *Price Index of Materials Used in Other than House Building*, ABS catalogue number 6407.0.)

continued

PRICE INDEX OF MATERIALS USED IN BUILDING OTHER THAN HOUSE BUILDING, HOBART¹: **Original**—continued
(Base year: 1989–90 = 100.0)

	All electrical materials		All mechanical services		All plumbing materials	
Period	Index	% change over previous period	Index	% change over previous period	Index	% change over previous period
1995–96	118.6	7.0	115.1	2.2	127.7	2.5
1996–97	117.4	–1.0	117.0	1.7	122.8	–3.8
1997–98	117.2	–0.2	117.0	—	121.9	–0.7
1997						
March	118.1	–0.2	116.8	—	121.4	0.5
June	117.5	–0.5	117.1	0.3	122.5	0.9
September	117.6	0.1	116.6	–0.4	122.8	0.2
December	117.8	0.2	116.8	0.2	122.0	–0.7
1998						
March	116.9	–0.8	117.4	0.5	121.6	–0.3
June	116.5	–0.3	117.1	–0.3	121.0	–0.5
September	116.1	–0.3	117.8	0.6	124.9	3.2
December	116.8	0.6	119.1	1.1	124.1	–0.6
1999						
March	115.2	–1.4	119.4	0.3	124.4	0.2
	All groups excluding electrical materials and mechanical services			All groups		
Period	Index	% change over previous period	Index	% change over previous period		
1995–96	115.5	2.5	115.1	2.6		
1996–97	116.8	1.1	116.3	1.0		
1997–98	118.0	1.0	117.4	0.9		
1997						
March	117.0	0.4	116.5	0.3		
June	117.3	0.3	116.7	0.2		
September	117.1	–0.2	116.5	–0.2		
December	117.7	0.5	117.2	0.6		
1998						
March	118.2	0.4	117.7	0.4		
June	118.9	0.6	118.1	0.3		
September	119.1	0.2	118.4	0.3		
December	119.0	–0.1	118.6	0.2		
1999						
March	118.8	–0.2	118.5	–0.1		

¹ Index numbers in this table have been recompiled to reflect the change to a quarterly collection basis from June 1997.
(Source: Price Index of Materials Used in Other than House Building, ABS catalogue number 6407.0.)

19 PRODUCTION OF SELECTED COMMODITIES: Original

Year or month	Dairy products ¹			Staff-hours worked	
	Whole milk ²	Factory butter ³	Factory cheese	Textile manufacturing ⁴	Vegetable preserving
	million litres	tonnes	tonnes	'000	'000
1995-96	513.8	9 589	24 852	1 443	1 784
1996-97	529.4	10 869	25 398	1 349	1 534
1997-98	542.8	8 745	27 444	1 125	1 128
1998					
April	32.0	600	1 783	88	97
May	24.6	492	1 221	89	110
June	16.0	392	1 399	95	101
July	12.4	296	628	104	94
August	23.3	511	424	82	93
September	58.1	937	2 849	98	75
October	81.0	1 157	4 084	105	83
November	81.8	1 414	4 379	94	103
December	77.2	1 565	4 088	83	103
1999					
January	66.1	1 068	3 398	42	51
February	50.5	940	2 675	90	86
March	54.0	940	2 876	96	96
April	44.3	n.y.a.	n.y.a.	82	90

Year or month (quarterly for electricity)	Newsprint ⁵	Refined zinc	Metal. refin.	Electricity ⁷
	'000 tonnes	'000 tonnes	Index ⁶	million kW.h
1995-96	242.9	207.8	104.7	9 100
1996-97	232.7	207.7	116.1	9 543
1997-98	n.p.	197.0	116.6	9 700
1998				
April	n.p.	14.3	114.4	..
May	n.p.	14.9	119.0	..
June	n.p.	17.7	121.0	(June qtr) 2 540
July	n.p.	18.2	121.8	..
August	n.p.	18.4	128.1	..
September	n.p.	17.3	119.6	(Sept qtr) 2 660
October	n.p.	18.1	126.3	..
November	n.p.	16.2	123.5	..
December	n.p.	17.3	116.0	(Dec qtr) 2 420
1999				
January	n.p.	17.8	126.2	..
February	n.p.	15.2	114.1	..
March	n.p.	17.4	124.6	(Mar. qtr) 2 260
April	n.p.	19.1	132.0	..

¹ Source: Australian Dairy Corporation.

² Includes the whole milk equivalent of farm cream intake.

³ Includes butter equivalent of butter oil.

⁴ Includes spinning, weaving and carpet making. Reported by establishments which manufacture textiles only, or manufacture clothing and textiles in the one plant.

⁵ Excludes production of directory newsprint and high grade specialty paper.

⁶ Metallurgical refining index (Base: 1979-80 = 100.0) Output from selected establishments covering the smelting and refining of ferro-alloys, zinc and aluminium. The weighting pattern is based on the establishments' value added as derived from the 1979-80 Manufacturing Census. For multi-product establishments, value added was apportioned to products on the basis of gross receipts from each product.

⁷ Collected on a quarterly basis as from 1997.

(Source: ABS unpublished data.)

20

LIVESTOCK SLAUGHTERING: **Original**

Year or month	Cattle		Calves	Sheep	Lambs	Pigs
	Bulls, bullocks and steers	Cows and heifers				
	'000	'000				
1995–96	95.4	88.9	41.4	349.7	393.3	86.5
1996–97	110.2	93.4	43.6	384.4	364.0	74.9
1997–98	93.4	123.6	53.9	461.0	423.3	78.1
1997						
April	10.3	10.6	1.6	46.5	34.4	6.5
1998						
April	7.5	12.9	2.2	42.6	44.6	6.2
May	8.4	15.2	1.9	32.0	42.9	6.7
June	7.8	12.3	1.0	24.5	42.3	8.4
July	8.4	10.4	2.3	21.7	37.9	8.5
August	6.7	5.3	18.7	13.6	33.2	5.9
September	5.7	8.2	26.0	16.6	42.5	6.8
October	7.0	7.2	7.4	19.2	31.4	6.2
November	6.9	8.6	1.0	38.1	30.1	5.3
December	8.3	12.1	0.3	51.2	40.6	8.0
1999						
January	7.5	9.9	0.1	49.8	44.6	4.7
February	8.1	10.9	0.2	55.7	43.7	5.1
March	7.3	9.9	0.5	r 41.2	r 45.4	8.4
April	8.9	11.2	1.9	33.1	44.1	6.8

(Source: ABS unpublished data.)

21

LIVESTOCK SLAUGHTERING: **Seasonally adjusted¹ and trend²**

Month	Seasonally adjusted			Trend		
	Cattle and calves	Sheep and lambs	Pigs	Cattle and calves	Sheep and lambs	Pigs
	'000	'000	'000	'000	'000	'000
1997						
April	22.8	70.5	6.8	22.1	67.8	6.5
1998						
April	25.2	76.9	6.0	23.9	70.9	6.4
May	23.7	64.8	6.3	24.0	70.1	6.7
June	22.7	65.5	8.2	24.2	70.2	6.9
July	25.3	66.8	7.2	24.3	71.4	7.2
August	24.8	79.8	6.5	24.2	72.7	7.2
September	25.2	85.9	7.4	23.8	73.8	6.9
October	22.1	63.4	6.6	23.1	74.9	6.5
November	20.7	71.8	5.9	22.4	75.3	6.2
December	23.1	78.1	6.5	21.8	75.2	6.1
1999						
January	20.8	73.0	5.0	21.7	75.0	6.2
February	22.3	84.4	5.8	21.8	74.6	6.4
March	20.4	71.5	8.2	22.0	73.7	6.6
April	24.2	65.9	6.8	22.4	73.3	6.9

¹ Seasonally adjusted factors are reviewed annually to take account of each additional year's original data. The results of the review are used to compile revised seasonally adjusted and trend estimates; see Notes page 2.

² ABS trend estimates for the most recent months are revised; see Notes page 2.

(Source: ABS unpublished data.)

22

MEAT PRODUCTION¹: **Original**

	<i>Beef</i>	<i>Veal</i>	<i>Mutton</i>	<i>Lamb</i>	<i>Pigmeat</i> ²	<i>Total</i>
<i>Year or month</i>	<i>tonnes</i>	<i>tonnes</i>	<i>tonnes</i>	<i>tonnes</i>	<i>tonnes</i>	<i>tonnes</i>
1995–96	45 376	875	7 414	7 409	5 633	66 707
1996–97	51 725	907	8 171	6 878	4 935	72 616
1997–98	53 061	1 148	9 840	8 072	4 915	77 036
1997						
April	5 331	37	989	650	425	7 431
1998						
April	4 813	49	1 313	846	396	7 418
May	5 431	44	636	836	437	7 385
June	4 631	22	485	830	561	6 529
July	4 474	50	425	717	560	6 227
August	2 772	372	268	640	376	4 428
September	3 339	512	304	816	441	5 412
October	3 535	150	362	596	392	5 034
November	4 102	23	744	574	339	5 781
December	5 192	9	1 025	769	489	7 483
1999						
January	4 301	5	998	853	301	6 459
February	4 888	6	1 143	829	333	7 199
March	4 445	14	830	869	546	6 704
April	5 147	44	672	878	450	7 192

¹ Carcass weight.² Includes pork used for production of bacon and ham.

(Source: ABS unpublished data.)

23

PRINCIPAL MINERAL CONCENTRATES PRODUCED: **Original**

	<i>Copper</i>	<i>Iron (pellets)</i>	<i>Lead</i>	<i>Lead- zinc</i>	<i>Tin</i>	<i>Zinc</i>
<i>Year or quarter</i>	<i>'000 tonnes</i>	<i>'000 tonnes</i>	<i>'000 tonnes</i>	<i>'000 tonnes</i>	<i>'000 tonnes</i>	<i>'000 tonnes</i>
1995–96	53.5	1 681.3	106.3	38.6	16.0	361.5
1996–97	99.7	809.4	101.4	38.0	16.3	356.9
1997–98	109.6	1 074.7	84.6	26.2	16.2	335.4
1997						
March	24.0	3.3	22.9	10.2	3.9	85.6
June	24.2	—	23.0	6.4	4.6	93.3
September	27.2	—	22.5	5.4	4.8	88.6
December	28.5	164.5	22.1	6.7	3.7	87.3
1998						
March	26.1	253.8	21.9	8.2	3.3	79.4
June	27.8	656.4	18.1	6.0	4.4	80.1
September	25.8	1 109.7	21.5	5.6	1.3	92.0
December	29.9	1 597.9	26.1	3.2	4.0	95.3
1999						
March p	n.y.a.	—	29.5	2.5	3.7	97.1

(Source: Mineral Resources Tasmania, Department of Infrastructure, Energy and Resources.)

24

SAWMILLS AND PLYWOOD MILLS, LOGS DELIVERED AND TIMBER PRODUCED: **Original**

Year or quarter	Tasmanian-grown logs delivered					Sawn, peeled and sliced timber produced ¹				
	<i>Eucalypts</i>	<i>Hardwoods, excluding eucalypts²</i>	<i>Plantation³ softwoods</i>	<i>Native softwoods⁴</i>	<i>Total</i>	<i>Eucalypts</i>	<i>Hardwoods, excluding eucalypts²</i>	<i>Plantation³ softwoods</i>	<i>Native softwoods⁴</i>	<i>Total</i>
	'000 m ³	'000 m ³	'000 m ³	'000 m ³	'000 m ³	'000 m ³	'000 m ³	'000 m ³	'000 m ³	'000 m ³
1995-96	602.8	13.0	343.7	1.4	960.9	192.4	4.4	152.0	0.5	349.3
1996-97	500.8	17.0	352.9	1.2	871.9	165.8	4.3	158.0	0.5	328.5
1997-98	496.8	24.3	357.7	1.6	880.3	171.1	5.3	167.3	0.4	344.2
1997										
March	108.7	6.6	85.0	0.4	200.8	34.0	1.0	36.6	—	71.6
June	143.9	3.9	89.4	0.3	237.5	44.5	1.2	38.4	0.2	84.3
September	139.5	2.7	98.3	0.3	240.9	52.4	1.5	42.3	0.1	96.3
December	123.4	3.1	73.4	0.2	200.2	45.3	1.0	41.2	0.1	87.6
1998										
March	105.0	13.8	99.5	0.3	218.6	32.4	1.2	44.6	0.1	78.3
June	128.9	4.6	86.5	0.6	220.6	41.1	1.6	39.1	0.1	81.9
September	129.9	3.8	88.7	0.2	222.7	43.9	1.4	41.5	—	86.8
December	130.7	2.9	81.3	0.2	215.1	39.9	1.2	42.5	0.1	83.8
1999										
March	110.8	9.7	90.7	0.2	211.4	35.4	0.8	42.6	—	78.9

¹ Includes plywood, veneer and sliced timber production converted to an equivalent cubic measurement.

² Includes blackwood, myrtle, sassafras etc.

³ Radiata pine.

⁴ Includes Huon pine, celery top pine and King William pine.

(Source: ABS unpublished data.)

25

CHIPPING AND GRINDING OF WOOD¹: **Original**

Year or quarter	Producing locations ²	Materials used ³		
		<i>Logs delivered⁴</i>	<i>Sawmill offcuts</i>	<i>Chipped and ground wood production</i>
	no.	'000 m ³	'000 m ³	('000 tonnes green weight)
1995-96	31	3 510.0	457.9	3 820.1
1996-97	27	3 207.4	433.2	3 609.3
1997-98	28	3 998.1	457.9	4 440.1
1997				
March	28	759.7	87.0	829.2
June	27	875.1	95.2	1 000.9
September	27	936.1	106.8	1 064.1
December	28	999.2	113.6	1 100.1
1998				
March	28	1 014.7	116.6	1 157.7
June	28	1 048.0	120.9	1 118.3
September	29	872.5	87.3	981.5
December	29	798.3	112.0	889.5
1999				
March	29	862.9	76.3	995.1

¹ Both hardwoods and softwoods, separate details are not available.

² Capable of producing at end of year or actually producing during quarter.

³ Data reported by weight, converted to cubic measure by the factor 0.95 m³ per tonne.

⁴ Includes log equivalent of limbwood and billets.

(Source: ABS unpublished data.)

Year or quarter	Sawmilling and plywood milling			Chipping and grinding ¹			Total		
	Crown land ²	Private land	Total	Crown land ²	Private land	Total	Crown land ²	Private land	Total
	'000 m ³	'000 m ³	'000 m ³	'000 m ³	'000 m ³	'000 m ³	'000 m ³	'000 m ³	'000 m ³
1995-96	773.5	187.4	960.9	1 579.6	1 930.4	3 510.0	2 353.1	2 117.8	4 470.9
1996-97	725.6	146.4	871.9	1 627.4	1 580.0	3 207.4	2 353.0	1 726.3	4 079.3
1997-98	750.7	129.6	880.3	1 894.9	2 103.1	3 998.1	2 645.7	2 232.7	4 878.3
1997									
March	170.3	30.5	200.8	375.7	383.9	759.7	546.0	414.5	960.5
June	198.5	39.1	237.5	437.2	437.9	875.1	635.7	477.0	1 112.6
September	201.0	39.8	240.9	464.9	471.2	936.1	665.9	511.0	1 177.0
December	166.6	33.6	200.2	485.0	514.3	999.2	651.5	547.9	1 199.4
1998									
March	191.9	26.7	218.6	466.6	548.1	1 014.7	658.5	574.9	1 233.3
June	191.2	29.4	220.6	478.5	569.5	1 048.0	669.7	598.9	1 268.6
September	188.3	34.3	222.7	341.0	531.5	872.5	529.4	565.8	1 095.2
December	183.4	31.7	215.1	422.4	375.9	798.3	605.8	407.6	1 013.4
1999									
March	184.1	27.3	211.4	367.0	495.8	862.9	551.1	523.2	1 074.3

¹ Logs used are generally below sawmilling standard; includes log equivalent of limbwood and billets.

² Comprises all areas (including concession areas) from which royalties are payable to Forestry Tasmania.
(Source: ABS unpublished data.)

27 BUILDING APPROVALS: **Original**

Year or month	Dwelling units				Value				
	New houses	New other residential buildings	Other dwell. units created (conversions etc.) ²	Total dwelling units	New dwelling units	Alterations and additions to residential buildings ³	Non-residential building ⁴		Total of all building
							Private	Total	
	no.	no.	no.	no.	\$'000	\$'000	\$'000	\$'000	\$'000
1995-96	1 938	601	7	2 546	217 445	36 890	119 849	216 752	471 086
1996-97	1 593	251	17	1 861	157 428	35 323	121 490	158 970	351 720
1997-98	1 419	219	5	1 643	142 366	38 432	82 734	125 466	306 264
1998									
April	122	11	—	133	11 230	2 660	5 846	8 522	22 411
May	106	20	2	128	10 643	3 842	11 628	14 555	29 039
June	97	9	1	107	9 160	3 491	4 379	8 850	21 500
July	117	2	1	120	10 535	3 440	8 481	11 687	25 662
August	118	10	1	129	10 860	2 765	11 191	13 402	27 027
September	129	9	1	139	12 548	3 048	8 398	8 718	24 314
October	117	21	1	139	12 498	3 001	13 874	15 424	30 923
November	97	11	—	108	9 484	2 944	6 717	7 861	20 289
December	112	2	—	114	11 366	2 910	2 378	6 664	20 940
1999									
January	114	3	—	117	11 264	2 818	15 875	45 841	59 923
February	97	12	—	109	10 719	2 655	4 164	4 234	17 609
March	116	9	1	126	12 077	3 092	10 237	16 463	31 632
April	110	14	2	126	12 418	3 892	23 814	26 864	43 198

¹ New individual dwelling units (e.g. flats, home units and villa units).

² From alterations and additions to residential building, conversions of non-residential building to residential building etc.

³ Valued at \$10,000 and over. Includes conversions and dwelling units approved as part of alterations and additions or as part of the construction of non-residential building.

⁴ Comprises non-residential building (new plus alterations and additions) valued at \$50,000 and over.

(Source: *Building Approvals, Tasmania*, ABS catalogue number 8731.6.)

28 SECURED HOUSING COMMITMENTS¹: **Original, seasonally adjusted and trend**

Month	Total number of dwellings ²			Total value of commitments ³		
	Original	Seasonally adjusted	Trend	Original	Seasonally adjusted	Trend
	no.	no.	no.	\$m	\$m	\$m
1998						
April	850	827	814	59	60	63
May	790	764	803	59	56	63
June	892	855	783	74	75	63
July	771	757	761	65	64	63
August	769	765	747	65	64	62
September	686	690	751	58	55	63
October	719	704	775	57	58	64
November	824	847	814	71	71	67
December	873	893	855	74	76	71
1999						
January	751	933	886	63	76	74
February	870	892	901	74	75	76
March	1 027	908	906	92	78	78
April	848	842	901	71	75	78

¹ New seasonal adjustment factors resulting from the annual seasonal reanalysis were introduced in the January 1998 issue.

² Includes new dwellings, established dwellings and refinancing. Excludes alterations and additions.

³ Commitment is a firm offer of housing finance. It either has been, or is normally expected to be, accepted. Includes commitments to provide housing finance to employees and commitments accepted and cancelled in the same month. Excludes alterations and additions. Includes refinancing.

(Source: *Housing Finance for Owner Occupation, Australia*, ABS catalogue 5609.0.)

Month	Deposits				
	Current bearing interest	Current – not bearing interest	Fixed	Investment savings accounts	Statement savings accounts
	\$m	\$m	\$m	\$m	\$m
1998					
April	760	245	1 795	632	233
May	752	243	1 805	633	234
June	715	239	1 789	633	232
July	724	241	1 879	642	238
August	737	258	1 907	644	245
September	797	245	1 919	650	249
October	776	232	1 947	653	253
November	780	238	1 864	651	252
December	773	249	1 877	653	253
1999					
January	796	248	1 878	655	255
February	805	245	1 904	655	257
March	814	260	1 926	649	266
April	801	258	1 928	638	269

Month	Deposits			Loans ²
	Passbook/School savings accounts	Other	Total	
	\$m	\$m	\$m	
1998				
April	99	94	3 857	4 811
May	98	95	3 860	4 828
June	97	92	3 796	4 811
July	97	87	3 906	4 859
August	97	87	3 974	4 866
September	95	86	4 041	4 917
October	95	85	4 041	4 858
November	96	86	3 967	4 916
December	77	88	3 969	4 907
1999				
January	89	88	4 008	4 879
February	88	88	4 048	4 960
March	80	89	4 084	5 018
April	87	92	4 073	5 029

¹ Details are the averages of weekly figures for each month. The figures are derived from returns submitted by banks authorised under the *Banking Act* together with similar returns voluntarily submitted by the State banks; they exclude the Reserve Bank.

² Excludes non-resident loans.

(Source: Reserve Bank of Australia.)

Year or quarter	Buildings and structures	Equipment, plant, and machinery	Total
	\$m	\$m	\$m
1996–97	128	559	687
1997–98	169	477	646
1998			
March	31	110	141
June	42	102	145
September	39	103	142
December	25	70	95
1999			
March	30	86	116

¹ Estimates based on a sample survey and therefore subject to sampling variability. Covers selected industries only—mining, manufacturing, finance, property and other selected industries.

² Data revised back to June quarter 1987. See *Improvements to ABS Economic Statistics* (catalogue number 1357.0).

(Source: *State Estimates of Private New Capital Expenditure*, ABS catalogue number 5646.0.)

31

ACCOMMODATION ESTABLISHMENTS: **Original**¹

Period	Establish-ments	Guest rooms	Bed spaces	Persons employed	Room nights occupied	Room occup-ancy rate	Guest nights	Bed occup-ancy rate	Guest arrivals	Takings from accomm-odation
	no.	no.	no.	no.	'000	%	'000	%	'000	\$'000
LICENSED HOTELS WITH FACILITIES										
1997										
Dec qtr	55	2 928	8 009	2 929	149.0	55.3	240.6	32.7	134.5	12 848
1998										
Oct	n.a.	n.a.	n.a.	n.a.	53.3	59.3	82.4	33.6	44.0	4 854
Nov	n.a.	n.a.	n.a.	n.a.	51.5	59.3	79.0	33.3	45.7	4 445
Dec	n.a.	n.a.	n.a.	n.a.	46.2	51.5	80.4	32.8	42.5	4 163
Dec qtr	54	2 897	7 910	2 958	151.0	56.7	241.9	33.2	132.2	13 462
MOTELS AND GUEST HOUSES WITH FACILITIES										
1997										
Dec qtr	52	1 744	5 351	729	83.0	51.8	152.8	31.0	90.3	6 368
1998										
Oct	n.a.	n.a.	n.a.	n.a.	30.1	55.6	54.0	32.3	29.2	2 408
Nov	n.a.	n.a.	n.a.	n.a.	30.2	57.6	53.0	32.8	28.4	2 709
Dec	n.a.	n.a.	n.a.	n.a.	25.4	46.9	48.7	29.1	26.8	2 420
Dec qtr	51	1 748	5 391	740	85.8	53.3	155.7	31.4	84.4	7 538
SERVICED APARTMENTS										
1997										
Dec qtr	22	824	3 067	424	41.5	54.8	n.a.	n.a.	n.a.	4 094
1998										
Oct	n.a.	n.a.	n.a.	n.a.	16.7	62.5	34.4	32.7	17.5	1 648
Nov	n.a.	n.a.	n.a.	n.a.	16.3	63.0	32.5	32.0	18.4	1 630
Dec	n.a.	n.a.	n.a.	n.a.	14.8	55.4	33.8	32.2	17.2	1 608
Dec qtr	24	864	3 386	426	47.9	60.3	100.7	32.3	53.1	4 886
TOTAL ESTABLISHMENTS										
1997										
Dec qtr	129	5 496	16 427	4 082	273.5	54.1	n.a.	n.a.	n.a.	23 310
1998										
Oct	n.a.	n.a.	n.a.	n.a.	100.2	58.6	170.8	33.0	90.7	8 910
Nov	n.a.	n.a.	n.a.	n.a.	98.1	59.3	164.5	32.9	92.6	8 784
Dec	n.a.	n.a.	n.a.	n.a.	86.5	50.6	162.9	31.5	86.4	8 191
Dec qtr	129	5 509	16 687	4 124	284.7	56.2	498.3	32.5	269.7	25 886

¹ Comprising establishments with 15 or more rooms or units. Note: The Survey of Tourist Accommodation has been substantially revised from the March quarter 1998. Information in respect of 1997 has been retabulated on the basis of the new scope; 1997 data will, therefore, differ from previously published data. For an explanation, including definitions, refer to *Tourist Accommodation*, ABS catalogue number 8635.0.
(Source: *Tourist Accommodation Australia*, ABS catalogue number 8635.0. For more detailed information, see also *Tourist Accommodation, Small Area Data, Tasmania*, ABS product number 8635.6.40.001)

32

NATIONAL PARKS, PERSON ENTRIES¹: Original

Tasmanian National Park attendance

	<i>Cradle Mountain² (Lake Dove)</i>	<i>Lake St Clair² (Cynthia Bay)</i>	<i>Freycinet²</i>	<i>Mt Field²</i>	<i>Asbestos Range³ (Bakers Beach)</i>	<i>Mole Creek Karst⁴ (Marakooopa Cave)</i>	<i>Maria Island⁵ (Darlington)</i>
Month	no.	no.	no.	no.	no.	no.	no.
1998							
March	21 100	13 500	25 300	16 100	3 000	2 394	1 523
April	20 100	9 500	23 000	13 300	2 700	2 696	1 411
May	10 300	4 300	11 500	6 400	1 200	1 292	867
June	p 9 600	2 300	9 100	4 700	1 200	1 323	634
July	p 8 000	2 100	8 000	5 000	1 000	936	193
August	8 000	2 600	8 000	6 000	1 300	874	346
September	11 000	4 900	13 400	6 800	1 800	1 925	606
October	13 000	7 600	17 100	8 800	2 300	2 124	1 206
November	13 000	9 300	19 900	9 800	2 700	2 508	1 176
December	20 000	11 200	28 500	14 800	3 500	4 017	1 317
1999							
January	p 30 000	20 400	48 000	29 500	6 200	4 780	2 660
February	p 18 000	14 100	31 900	16 500	3 400	2 330	1 305
March	p 19 000	14 400	27 700	16 800	2 900	2 801	1 603

¹ A 'person entry' occurs whenever a visitor enters a National Park. Measurement occurs at the designated sites in brackets.

² Estimated through a combination of traffic and booth counts.

³ Estimated through traffic counts.

⁴ Number of people taken on a guided tour.

⁵ The sum of ferry arrivals and estimated plane passengers.

(Source: Tasmanian Parks and Wildlife Service, Department of Primary Industries, Water and Environment.)

33

TRACKS IN NATIONAL PARKS, WALKER REGISTRATIONS¹: Original

	<i>Overland³</i>	<i>South Coast⁴</i>	<i>Freycinet⁵</i>	<i>Port Davey⁴</i>	<i>Frenchmans Cap</i>
Month ²	no.	no.	no.	no.	no.
1998					
March	978	99	185	25	77
April	680	52	222	6	104
May	216	17	65	3	23
June	108	5	42	3	10
July	43	—	101	—	6
August	45	6	64	—	7
September	116	4	93	2	6
October	200	13	326	10	36
November	581	59	193	14	24
December	1 372	211	348	52	92
1999					
January	1 776	p 308	454	p 73	176
February	1 325	p 159	243	p 44	87
March	1 084	p 61	226	p 14	59

¹ Numbers include only walkers who registered and represents their intention.

² Month of departure.

³ Sum of registrations at Cradle Mt and Lake St Clair.

⁴ Sum of registrations to walk the length of the track in any direction, irrespective of starting point.

⁵ All overnight walkers registered in the park.

(Source: Tasmanian Parks and Wildlife Service, Department of Primary Industries, Water and Environment.)

34 REGISTRATIONS OF NEW MOTOR VEHICLES¹: **Original**

	Passenger vehicles	Other vehicles ²	Total (excl. motor cycles)	Vehicles registered by vehicle rental businesses ³	Motor cycles
<i>Year or month</i>	<i>no.</i>	<i>no.</i>	<i>no.</i>	<i>no.</i>	<i>no.</i>
1996	11 445	2 728	14 173	2 384	472
1997	12 512	2 606	15 118	2 458	518
1998	12 857	2 848	15 705	1 830	567
1998					
April	817	216	1 033	6	34
May	941	301	1 242	3	38
June	1 275	325	1 600	82	32
July	1 216	281	1 497	42	43
August	1 112	239	1 351	215	37
September	1 280	216	1 496	408	44
October	1 015	218	1 233	134	56
November	1 101	223	1 324	194	68
December	1 556	217	1 773	712	63
1999					
January	777	199	976	5	56
February	741	187	928	23	48
March	985	242	1 227	20	45
April	879	219	1 098	—	45

¹ Includes State and Commonwealth Government-owned motor vehicles other than those belonging to the defence services. Excludes tractors, plant and equipment, caravans and trailers.

² Comprises utilities, panel vans, rigid and articulated trucks and other truck-type vehicles (i.e. motor vehicles designed for purposes other than freight carrying, e.g. campervans, tow trucks, ambulances and hearses) and buses.

³ These figures are included in previous columns.

(Source: *Motor Vehicle Registrations Australia*, ABS catalogue number 9301.0. ABS unpublished data.)

35 TURNOVER OF RETAIL ESTABLISHMENTS AT CURRENT PRICES: **Original and trend**

<i>Period</i>	<i>Original</i> \$m	<i>Trend estimates¹</i>	
		\$m	Change from corresponding month of previous year %
1998			
April	257.2	263.0	0.9
May	259.5	262.7	0.2
June	245.5	263.1	-0.5
July	256.7	263.6	-1.3
August	246.0	264.0	-2.2
September	252.8	264.4	-2.7
October	269.1	265.2	-2.7
November	272.0	266.8	-1.8
December	348.4	269.2	-0.3
1999			
January	270.5	272.1	1.6
February	251.5	275.0	3.6
March	277.4	277.4	5.1
April	269.6	279.3	6.2

¹ Trend estimates for the most recent months have been revised. See Notes on page 2.
(Source: *Retail Trade, Australia*, ABS Catalogue number 8501.0)

36

VALUE OF OVERSEAS TRADE¹, TASMANIA AND AUSTRALIA: **Original**

Period	Tasmania				Australia			
	Imports	Imports: change over preceding period	Exports	Exports: change over preceding period	Imports	Imports: change over preceding period	Exports ²	Change over preceding period
		%		%		%		%
1995–96	351	3	1 620	—	77 792	4	76 005	13
1996–97	396	13	1 708	5	78 998	2	78 932	4
1997–98	385	-3	r 2 136	25	90 684	15	87 769	11
1998								
April	43	23	263	21	7 446	-9	7 198	-2
May	23	-46	r 251	-5	7 657	3	7 943	10
June	30	28	236	r -6	8 466	11	7 733	-3
July	40	34	153	-35	8 905	5	7 471	-3
August	33	-17	130	-15	8 145	-9	7 750	4
September	48	44	146	12	8 544	5	7 601	-2
October	44	-7	158	8	9 002	5	7 814	3
November	35	-21	150	-5	8 535	-5	r 7 289	-7
December	31	-11	172	15	r 7 820	-8	r 7 894	8
1999								
January	32	r 2	135	-22	7 231	-8	6 300	-20
February	30	-6	140	r 3	r 7 114	-2	r 6 234	-1
March	33	r 11	r 254	r 82	r 8 699	22	r 7 325	r 17
April	29	-13	195	-23	7 730	-11	6 437	-12

¹ It is difficult to get a complete picture of Tasmania's trade performance as imports recorded by the ABS include only goods imported directly into the State from overseas, and reported by the Australian Customs Service. Many of Tasmania's goods imported for direct consumption, or input into further processing industries, arrive via interstate ports, and are not included in this table.

² Includes re-exports.

37

MERCHANDISE EXPORTS, by selected countries and country groups: **Original**

Period	European Community			East Asia			Hong Kong	ASEAN ¹	Total all countries
	United States of America	United Kingdom	Total European Community	Japan	Korea	Taiwan			
	\$'000	\$'000	\$'000	\$'000	\$'000	\$'000			
1995–96	115 543	114 464	199 750	494 322	90 547	105 491	122 354	315 066	1 619 711
1996–97	117 245	166 308	299 844	467 855	64 135	93 951	100 881	364 586	1 708 322
1997–98	176 175	25 063	338 791	549 048	67 801	150 405	132 551	r 399 472	r 2 136 171
1998									
April	13 167	3 146	77 905	41 505	4 033	18 618	6 399	23 967	262 815
May	15 806	1 851	78 828	53 381	7 611	22 669	22 863	28 099	r 250 893
June	19 631	1 963	88 611	48 294	7 168	7 587	8 567	21 923	235 872
July	16 095	3 106	12 893	39 306	2 697	16 509	12 241	36 046	153 470
August	11 252	1 413	7 383	28 889	7 748	13 113	13 206	29 109	r 129 852
September	26 195	797	9 845	26 704	4 171	13 518	14 307	27 355	145 896
October	8 842	776	9 258	47 311	9 542	12 947	11 503	39 777	r 157 588
November	30 044	2 284	10 477	30 573	10 115	9 734	11 037	24 559	r 149 731
December	24 835	765	12 761	55 933	14 878	9 615	9 098	22 214	r 171 707
1999									
January	6 028	3 834	9 673	r 36 522	4 900	15 231	13 337	r 32 803	r 134 706
February	13 874	3 491	r 14 356	r 33 144	10 930	10 973	r 12 835	r 23 051	r 139 262
March	r 37 022	r 3 932	r 86 270	r 40 654	8 109	r 11 599	r 11 872	r 38 765	r 253 884
April	31 713	3 245	18 357	31 314	9 661	10 628	15 509	27 356	195 219

¹ ASEAN member countries are: Brunei, Indonesia, Laos, Malaysia, Myanmar, Philippines, Singapore, Thailand and Viet Nam.

38 MERCHANDISE EXPORTS, by selected commodity groups: **Original**

	<i>Meat and meat preparations</i>	<i>Dairy products</i>	<i>Fish, crustaceans and molluscs</i>	<i>Vegetables and fruit</i>	<i>Wood and woodchips</i>	<i>Textile fibres and wastes</i>	<i>Metallic ores and metal scrap</i>
<i>Period</i>	\$'000	\$'000	\$'000	\$'000	\$'000	\$'000	\$'000
1995-96	63 863	110 241	103 888	58 255	239 987	37 607	190 224
1996-97	55 604	110 108	121 996	36 541	241 388	38 762	184 100
1997-98	71 918	133 675	141 205	55 242	311 359	29 641	254 054
1998							
April	6 972	11 752	9 623	12 325	30 037	2 331	15 228
May	7 946	10 878	11 058	6 487	23 120	749	28 101
June	6 393	11 675	5 018	4 306	25 722	1 481	35 102
July	4 772	4 875	15 622	4 446	24 972	2 555	16 813
August	4 872	5 001	17 970	3 638	r 18 561	1 486	18 557
September	3 291	5 608	12 952	1 652	12 479	1 593	12 573
October	3 852	8 119	7 915	1 095	r 25 095	2 406	r 33 704
November	4 563	9 968	7 096	177	28 936	1 908	r 24 505
December	6 415	11 394	12 110	219	30 445	4 494	r 37 028
1999							
January	6 764	9 156	12 860	654	r 20 394	1 026	r 22 666
February	6 027	7 395	r 10 290	r 4 646	r 24 052	1 413	r 13 051
March	r 4 933	10 636	r 7 613	r 9 360	r 31 152	4 989	r 24 896
April	5 130	9 197	13 223	14 007	23 752	1 927	20 509
	<i>Medical and pharmaceut- ical products</i>	<i>Paper and paperboard</i>	<i>Iron and steel</i>	<i>Non-ferrous metals</i>	<i>Road vehicles & transport equipment</i>	<i>Other & combined confidential items</i>	<i>Total all commodity groups</i>
<i>Period</i>	\$'000	\$'000	\$'000	\$'000	\$'000	\$'000	\$'000
1995-96	17 692	27 300	105 895	406 837	135 758	122 165	1 619 711
1996-97	22 886	31 913	82 219	438 558	212 341	131 907	1 708 322
1997-98	34 755	21 222	76 463	r 557 126	280 251	169 261	r 2 136 171
1998							
April	2 872	393	4 741	30 333	123 758	12 450	262 815
May	3 318	25	16 813	r 57 925	68 953	15 519	r 250 893
June	4 436	4	7 943	46 232	73 641	13 917	235 872
July	5 065	19	9 195	50 084	83	14 968	153 470
August	5 095	61	328	39 208	52	15 023	r 129 852
September	6 492	11	15 315	57 485	749	15 696	145 896
October	3 980	289	7 137	36 898	2	27 097	r 157 588
November	2 647	249	3 279	51 278	1 330	13 795	r 149 731
December	3 129	626	8 473	46 084	16	11 275	r 171 707
1999							
January	6 248	1 198	6 926	37 556	328	8 929	r 134 706
February	5 245	402	6 088	40 608	583	r 19 463	r 139 262
March	4 856	335	r 13 502	54 787	65 401	r 21 423	r 253 884
April	3 467	523	5 681	50 194	34 067	13 544	195 219

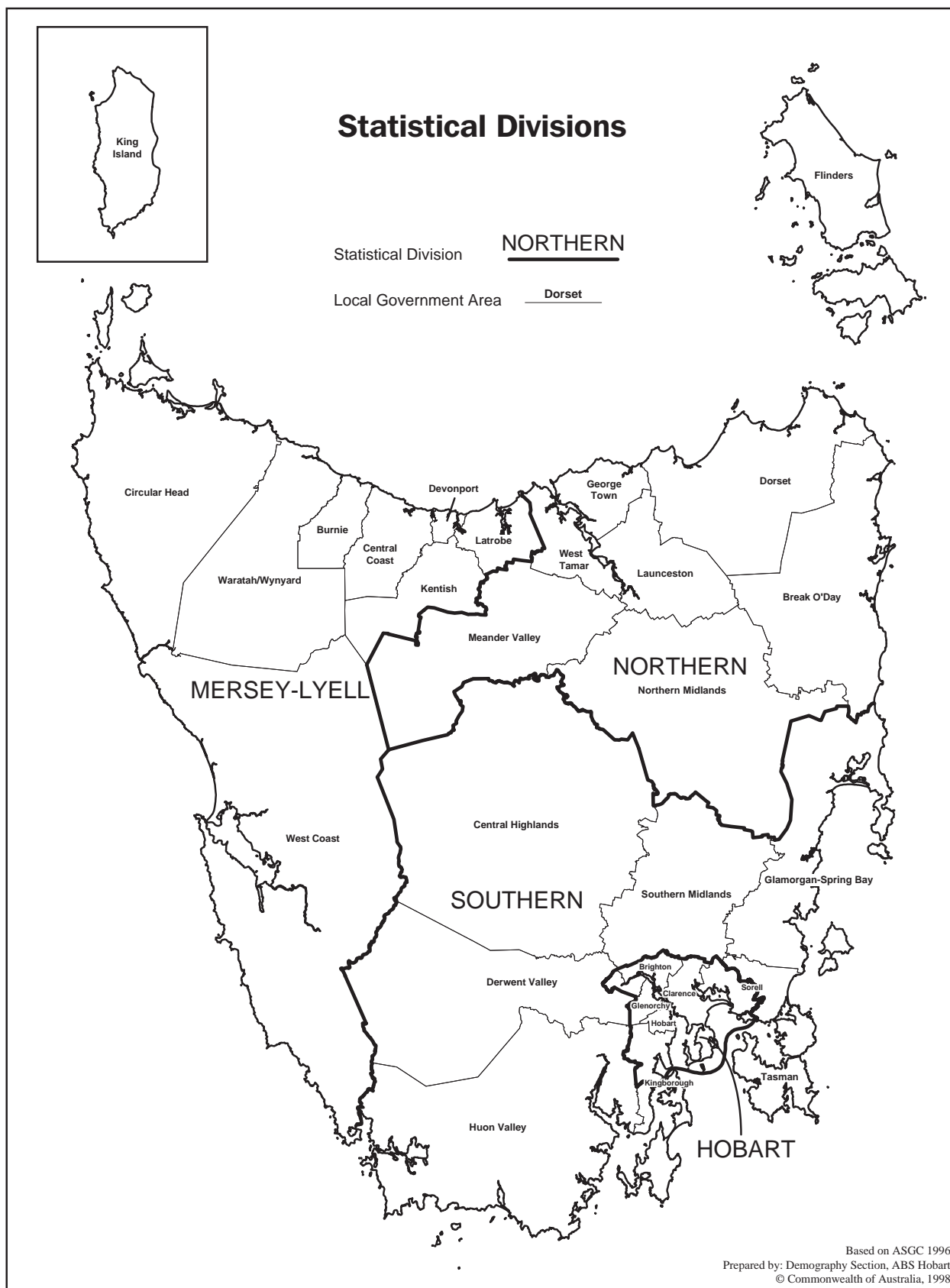
	NSW	Vic.	Qld	SA	WA	Tas.	Aust. ¹
Population							
Estimated resident population, December 1998 ('000) p	6 384.3	4 689.8	3 485.2	1 490.4	1 847.8	471.1	18 871.8
Proportion of Australian population, December 1998 (%) p	33.8	24.9	18.5	7.9	9.8	2.5	100.0
Population growth rate, 12 months to December 1998 (%) p	1.3	1.3	1.7	0.5	2.0	-0.3	1.3
Labour Force							
Employment growth, 12 months to May 1999 (trend series) (%)							
Males	2.6	0.9	3.1	2.4	1.3	-1.7	2.1
Females	1.4	-0.2	2.4	4.5	0.9	-0.9	1.3
Persons	2.1	0.4	2.8	3.3	1.1	-1.3	1.7
Unemployment rate (trend series), May 1999 (%)	6.7	7.8	8.0	8.6	6.9	10.4	7.4
Unemployment growth, 12 months to May 1999 (trend series) (%)	-8.6	-7.1	-6.3	-13.0	-1.0	-3.4	-7.6
Participation rate (trend series), May 1999 (%)	61.6	62.6	65.0	60.2	65.9	58.6	62.9
Average weekly overtime worked per employee, February 1999 (hours)	1.2	1.1	0.9	0.9	1.1	0.8	1.1
Job vacancy rate, February 1999 (%)	0.9	0.6	1.2	0.8	1.0	0.7	0.9
Working days lost through industrial disputes, 12 months to February 1999 (days per '000 employees)	89	97	37	30	82	19	73
Wages and Prices							
Average weekly total earnings, full-time adult employees (trend series) February 1999 (\$)							
Males	888.20	830.00	790.20	805.50	860.10	794.80	845.70
Females	715.60	674.90	637.80	652.90	651.60	631.70	681.80
Persons	825.10	773.50	733.40	748.30	786.70	740.50	785.20
Average weekly total earnings, full-time adult employees, growth rate (trend series), 12 months to February 1999 (%)	5.2	1.7	1.3	5.7	2.6	3.2	3.2
Consumer price index, all groups, annual growth to March quarter 1999 (%) ²	1.6	1.2	0.7	0.8	1.5	0.5	1.2
Building							
% change in the number of new residential dwelling units approved in the 12 months ended April 1999, over the same period previous year	-1.2	12.3	-17.6	11.3	15.0	-12.6	0.9
Private Investment and Retail Trade							
% change in private new capital expenditure, 12 months ended March 1999, over the same period previous year (original)	3.6	2.1	1.8	-17.3	-2.7	-26.4	2.4
% change in <i>trend</i> estimates turnover of retail establishments, April 1999 (change from corresponding month of the previous year)	7.5	11.9	8.3	3.5	6.2	6.2	8.3
Transport							
% change in number of new motor vehicles (excluding motorcycles) registered in the 12 months ended April 1999, over the same period previous year	8.7	11.7	7.7	7.8	4.0	1.8	8.2
Agriculture							
% change in the number of livestock slaughtered 12 months ended April 1999 over the same period previous year							
Cattle and calves	-8.7	-3.7	8.1	-24.9	-1.3	2.6	-1.7
Sheep and lambs	-2.4	-0.6	-1.5	-8.4	-19.0	-0.7	-5.1
Tourism: Room occupancy rates							
Hotels, motels & guest houses, & serviced apartments with facilities, December quarter 1998 (%)	59.8	58.7	60.6	60.8	57.7	56.2	59.4
Australian National and State Accounts							
% change in Domestic (State) Final Demand, ³ Chain Volume Measures							
Trend Series							
Dec. qtr 1998 to Mar. qtr 1999	1.5	0.7	1.9	0.2	-1.4	0.8	1.2
Mar. qtr 1998 to Mar. qtr 1999	4.3	5.1	7.5	0.4	-3.4	—	4.8

¹ Australian totals include the ACT and NT, with the exception of Agriculture, which excludes both. ² CPI applies to State capitals.
³ Total of four types of expenditure: Private investment, Private consumption, Government investment, Government consumption.

Particulars	Unit	Greater Hobart and Southern Statistical Division	Northern Statistical Division	Mersey-Lyell Statistical Division	Tasmania
Area , 30 June 1996	km ²	25 521	19 935	22 507	67 964
Population					
Estimated resident population, 30 June 1996	no.	230 187	134 047	110 209	474 443
Estimated resident population, 30 June 1998 p	no.	229 593	133 229	109 063	471 885
Births 1997 ¹	no.	2 575	1 735	1 518	6 007
Deaths 1997 ¹	no.	1 837	1 098	866	3 809
Labour Force (original), May 1999					
Total employed.	no.	94 800	58 500	43 400	196 700
Total unemployed	no.	10 400	5 300	5 400	21 100
Unemployment rate	%	9.9	8.2	11.1	9.7
Participation rate	%	59.0	60.6	56.4	58.9
Schools, 1997²					
Government	no.	102	60	60	222
Non-government	no.	35	16	16	67
Full-time school students, 1997²					
Government	no.	29 355	17 913	15 653	62 921
Non-government	no.	12 128	4 909	4 199	21 236
Educational qualification, 1996 Census³					
Bachelor degree or higher ⁴	no.	17 058	7 152	3 908	28 184
Undergraduate diploma	no.	5 893	3 268	2 181	11 374
Associate diploma	no.	3 775	1 902	1 466	7 184
Skilled vocational	no.	16 255	0 040	8 841	35 238
Basic vocational	no.	4 548	2 632	2 305	9 515
Agriculture					
Establishments with agricultural activity, 1996–97 season	no.	1 146	1 605	1 785	4 536
Total area of establishments	ha	723 377	867 132	329 439	1 919 948
Crops, production, 1996–97 season					
Potatoes	tonnes	4 890	105 493	207 066	317 449
Onions	tonnes	1 028	11 133	47 517	59 677
Apples	tonnes	42 829	4 695	8 125	55 649
Barley	tonnes	8 570	22 999	3 668	35 237
Livestock, 1996–97 season					
Beef cattle	no.	89 027	213 141	212 393	514 561
Dairy cattle	no.	6 313	77 887	126 437	210 637
Sheep and lambs	no.	1 779 992	2 014 236	182 361	3 976 589
Pigs	no.	2 299	17 313	4 240	23 852
Gross value of agric. production, 1997–98p	\$m	n.y.a.	n.y.a.	n.y.a.	717
Tourist accommodation					
Hotels, motels, guest houses & serviced apartments. ⁵					
Establishments, Dec quarter 1998	no.	52	36	41	129
Room occupancy rates, 1997–98	%	56.5	50.8	43.8	51.6
Takings, 1997–98	\$'000	46 034	24 092	17 178	87 304
Business locations, September 1998					
Locations with manufacturing activity					
Less than 20 employees	no.	424	327	257	1 008
20 or more employees	no.	83	67	48	198
Total	no.	507	394	305	1 206
Locations with retail activity					
Less than 20 employees	no.	2 046	1 346	1 133	4 525
20 or more employees	no.	82	43	35	160
Total	no.	2 128	1 389	1 168	4 685
Building, 1997–98					
New dwelling units approved	no.	851	471	316	1 638
Value of total residential building approved	\$'000	96 910	49 006	34 882	180 798
Value of total building approved	\$'000	154 801	96 463	55 001	306 264
Dwellings, Census 1996³					
Total dwellings	no.	98 815	57 467	45 529	201 820
Occupied private dwellings	no.	85 255	49 759	40 183	175 197
Fully owned	no.	34 338	21 563	18 359	74 260

¹ Births and deaths are based on usual residence year of registration. Total Tasmania includes usual residences other than Tasmanian Statistical Divisions. ² Source: DETYA and Tasmanian Department of Education.

³ Total includes migratory statistical division. ⁴ Includes Higher degree, Postgraduate diploma and Bachelor degree. ⁵ 15 rooms or more.



SELF-HELP ACCESS TO STATISTICS

<i>CPI INFOLINE</i>	For current and historical Consumer Price Index data, call 1902 981 074 (call cost 75c per minute).
<i>DIAL-A-STATISTIC</i>	For the latest figures for National Accounts, Balance of Payments, Labour Force, Average Weekly Earnings, Estimated Resident Population and the Consumer Price Index call 1900 986 400 (call cost 75c per minute).
<i>INTERNET</i>	www.abs.gov.au
<i>LIBRARY</i>	A range of ABS publications is available from public and tertiary libraries Australia-wide. Contact your nearest library to determine whether it has the ABS statistics you require.

WHY NOT SUBSCRIBE?

<i>PHONE</i>	+61 1300 366 323
<i>FAX</i>	+61 03 9615 7848

CONSULTANCY SERVICES

ABS offers consultancy services on a user pays basis to help you access published and unpublished data. Data that is already published and can be provided within 5 minutes is free of charge. Statistical methodological services are also available. Please contact:

<i>INQUIRIES</i>	<i>City</i>	<i>By phone</i>	<i>By fax</i>
	Canberra	02 6252 6627	02 6207 0282
	Sydney	02 9268 4611	02 9268 4668
	Melbourne	03 9615 7755	03 9615 7798
	Brisbane	07 3222 6351	07 3222 6283
	Perth	08 9360 5140	08 9360 5955
	Adelaide	08 8237 7400	08 8237 7566
	Hobart	03 6222 5800	03 6222 5995
	Darwin	08 8943 2111	08 8981 1218

POST Client Services, ABS, PO Box 10, Belconnen ACT 2616

EMAIL client.services@abs.gov.au



2130360007994
ISSN 1034-1803

RRP \$18.00